

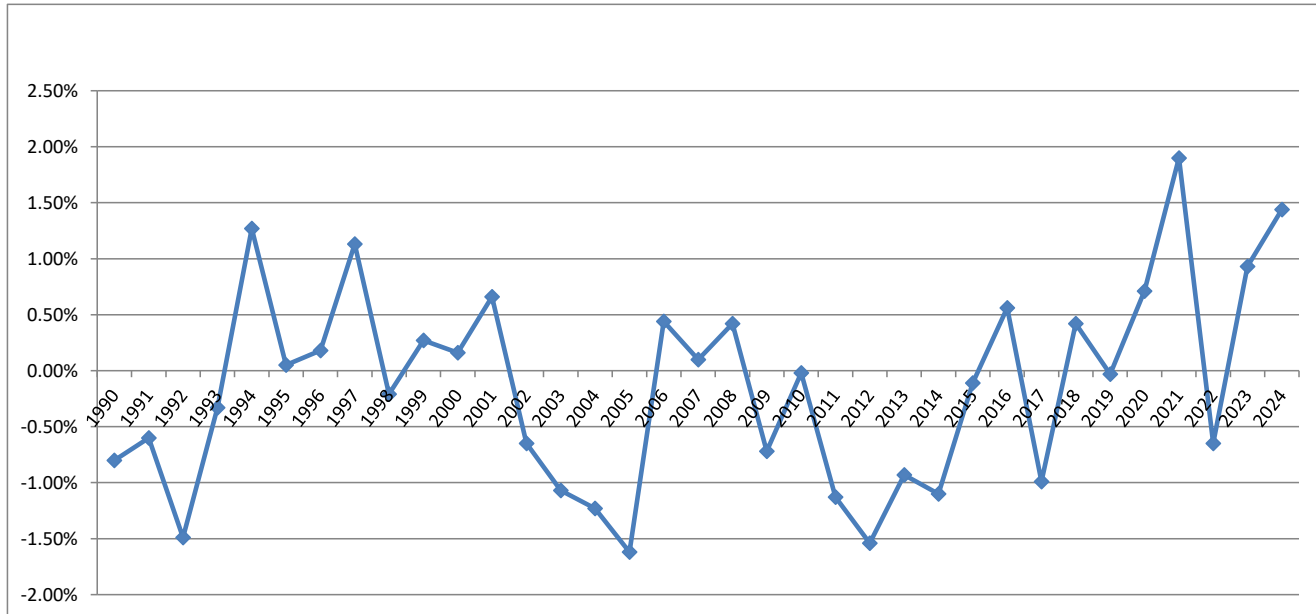
### Federal Medical Assistance Percentages (FMAPs)

- ▶ The FMAP is the share of state Medicaid benefit costs paid by the federal government.
- ▶ Pursuant to federal law, the Secretary of the U.S. Dept. of Health and Human Services calculates the FMAPs each year.
- ▶ The FMAP is calculated based on a three-year average of state per capita personal income compared to the national average.
- ▶ No state can receive less than 50% or more than 83%.
- ▶ States also receive "enhanced FMAPs" for expansion populations under the ACA and for the *Childrens Health Insurance Program (CHIP)* .

**Vermont FMAP (Federal Fiscal Year)**

Year	Federal Share	State Share	Difference
1990	62.77%	37.23%	
1991	61.97%	38.03%	-0.80%
1992	61.37%	38.63%	-0.60%
1993	59.88%	40.12%	-1.49%
1994	59.55%	40.45%	-0.33%
1995	60.82%	39.18%	1.27%
1996	60.87%	39.13%	0.05%
1997	61.05%	38.95%	0.18%
1998	62.18%	37.82%	1.13%
1999	61.97%	38.03%	-0.21%
2000	62.24%	37.76%	0.27%
2001	62.40%	37.60%	0.16%
2002	63.06%	36.94%	0.66%
2003	62.41%	37.59%	-0.65%
2004	61.34%	38.66%	-1.07%
2005	60.11%	39.89%	-1.23%
2006	58.49%	41.51%	-1.62%
2007	58.93%	41.07%	0.44%
2008	59.03%	40.97%	0.10%
2009	59.45%	40.55%	0.42%
2010	58.73%	41.27%	-0.72%
2011	58.71%	41.29%	-0.02%
2012	57.58%	42.42%	-1.13%
2013	56.04%	43.96%	-1.54%
2014	55.11%	44.89%	-0.93%
2015	54.01%	45.99%	-1.10%
2016	53.90%	46.10%	-0.11%
2017	54.46%	45.54%	0.56%
2018	53.47%	46.53%	-0.99%
2019	53.89%	46.11%	0.42%
2020	53.86%	46.14%	-0.03%
2021	54.57%	45.43%	0.71%
2022	56.47%	43.53%	1.90%
2023	55.82%	44.18%	-0.65%
2024	56.75%	43.25%	0.93%
2025	58.19%	41.81%	1.44%

**Vermont FMAP Percentage Change Federal Fiscal Years 1991-2025**



**COMPARISON OF FMAPs - Selected States (FFY 2024)**

<u>New England States</u>	<u>Highest FMAP</u>	<u>Lowest FMAP (50% FMAP)</u>	
CT, NH, MA = 50%	Mississippi (77.76%) ↑	California	New Hampshire
RI = 54.09% ↑	West Virginia (74.99%) ↑	Colorado	New Jersey
Vermont = 54.57% ↑	New Mexico (73.46%) ↑	Connecticut	New York
Maine = 63.69% ↓	Alabama (72.58%) ↑	Maryland	Washington
		Massachusetts	Wyoming

↑ = Increased from previous year  
↓ = Decreased from previous year

- Years where FMAP decreased from previous year

ACA = Affordable Care Act

**State Fiscal Year**  
(as used in state budget)

Year	State Share
1991	37.83%
1992	38.48%
1993	39.75%
1994	40.37%
1995	39.50%
1996	39.14%
1997	39.00%
1998	38.10%
1999	37.98%
2000	37.83%
2001	37.64%
2002	37.11%
2003	36.57%
2004	34.48%
2005	39.58%
2006	41.11%
2007	41.18%
2008	41.00%
2009	33.90%
2010	30.04%
2011	31.93%
2012	42.14%
2013	43.58%
2014	43.56%
2015	43.51%
2016	44.97%
2017	45.68%
2018	46.28%
2019	46.21%
2020	46.13%
2021	45.61%
2022	44.01%
2023	44.02%
2024	43.48%
2025	42.17%

Temporary fiscal relief to states

ARRA

Affordable Care Act (ACA) "Leahy Bump"

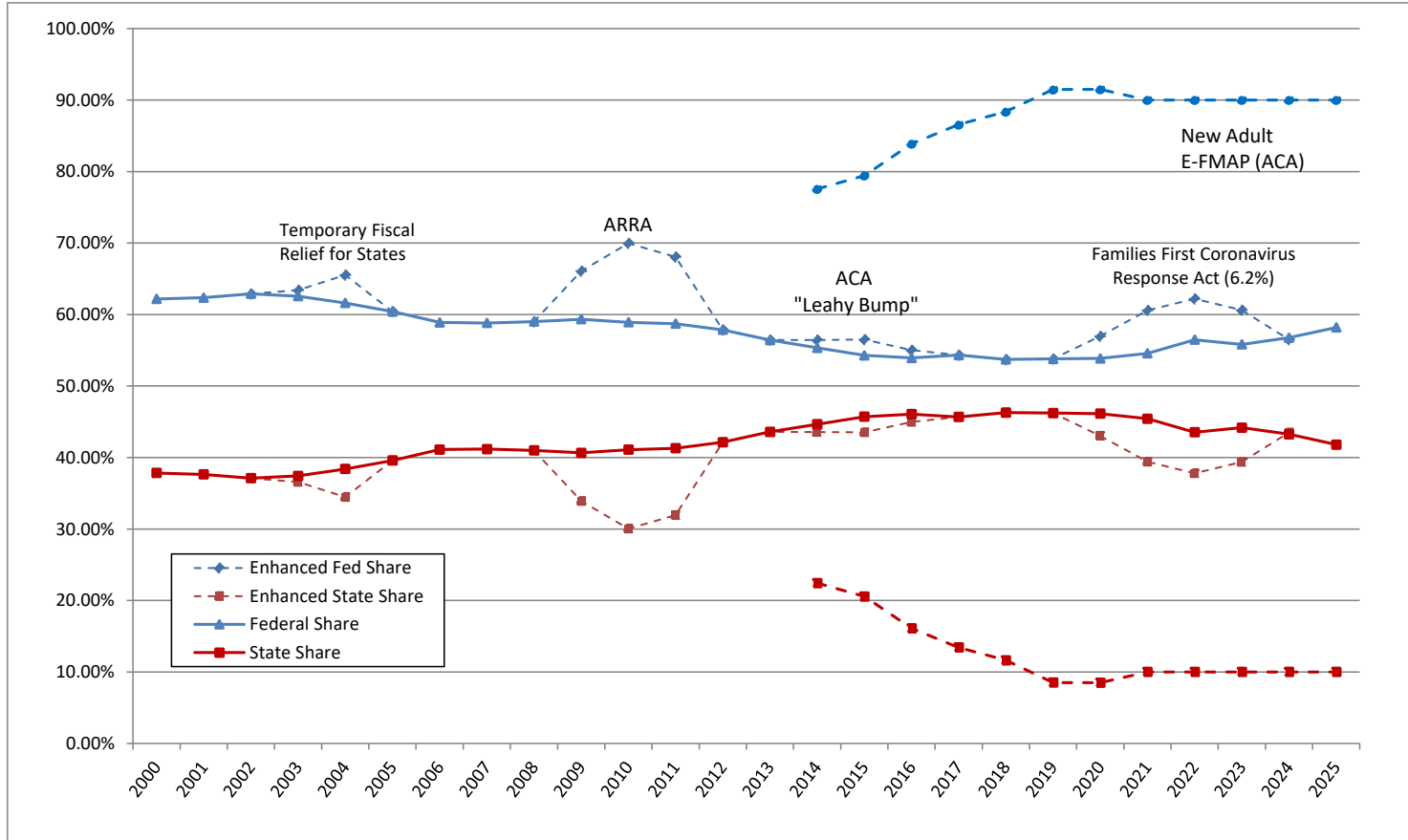
+ 6.2% FMAP bump, Families First Coronavirus Response Act

  = Years where state received enhancements to FMAP

ARRA = American Recovery & Reinvestment Act

ACA = Affordable Care Act

**FMAP - State Fiscal Years 2000 - 2025 with Enhancements**



▶ Vermont receives enhanced FMAP (E-FMAP) for two Medicaid Eligibility Groups (MEGs):

1) New Adult (childless) = 90% (federal share) / 10% (state share)

- Enacted as part of the Affordable Care Act (ACA).
- Applied to Medicaid eligible expenditures for approx. 40,000 childless adults.

2) Children's Health Insurance Program (CHIP, formerly known as SCHIP)

- SFY23 E-FMAP = 69.19% (federal share) / 30.81% (state share)
- SFY24 E-FMAP = 69.56% (federal share) / 30.44% (state share)
- SFY25 E-FMAP = 70.48% (federal share) / 29.52% (state share)

} Applied to Medicaid eligible expenditures for approx. 4,700 low-income children.