

Dupree 9/11/13

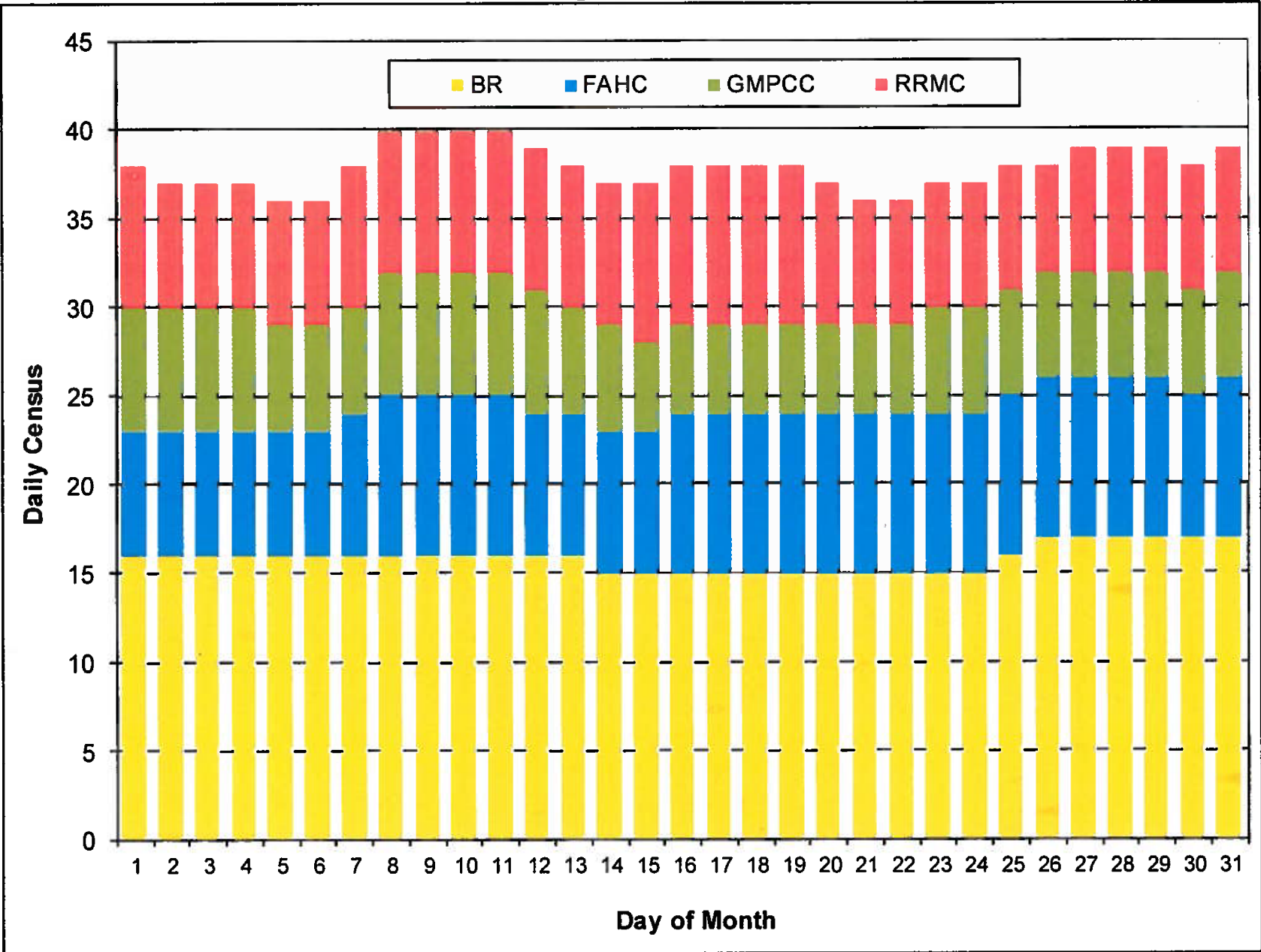
J.1.

System Total Level I Hospital Beds and Trend Utilization by Month

Report Date: September 10, 2013

	Jul-12	Aug-12	Sep-12	Oct-12	Nov-12	Dec-12	Jan-13	Feb-13	Mar-13	Apr-13	May-13	Jun-13	Jul-13	Aug-13
SYSTEM TOTAL														
Total Level I Beds	27	27	27	27	27	27	35	35	35	35	35	35	35	35
Total Level I Admissions this Month	23	17	9	25	13	21	22	13	20	22	26	10	19	16
Total Level 1 Discharges this Month	6	15	7	19	21	15	17	17	13	15	19	17	19	17
Total Level 1 Inpatients during Month	24	35	29	45	39	41	48	42	47	56	65	58	57	55
Average Daily Census		19	23	25	24	24	29	29	32	37	45	44	38	39
LOS for discharged patients (Average)	8	22	20	42	38	39	43	54	38	60	40	76	50	62
Over/Under for Total Planned Beds	UNDER	UNDER	UNDER	UNDER	UNDER	UNDER	UNDER	UNDER	UNDER	OVER	OVER	OVER	OVER	OVER
BY HOSPITAL														
Brattleboro Retreat														
Total Level I Beds	14	14	14	14	14	14	14	14	14	14	14	14	14	14
Total Admissions during Month	16	13	8	13	9	14	7	9	10	3	11	3	3	3
Total Level 1 Discharges this Month	4	9	6	12	14	13	7	7	7	5	7	8	3	2
Total Level 1 Inpatients during Month	16	25	24	30	27	28	22	23	27	23	29	25	19	20
Average Daily Census	11	14	18		17		14	16	19	18	21		16	17
LOS for discharged patients	10	21	21	52	50	36	63	75		68	46	85	81	117
Over/Under for Total Planned Beds	UNDER	UNDER	OVER	OVER	OVER	OVER	OVER	OVER	OVER	OVER	OVER	OVER	OVER	OVER
RRMC														
Total Level I Beds		6	6	6	6	6	6	6	6	6	6	6	6	6
Total Admissions during Month	7	4	1	5	1	4	2	0	5	8	8	2	4	5
Total Level 1 Discharges this Month	2	6	1	3	3	1	5	2	0	4	8	2	6	6
Total Level 1 Inpatients during Month	7	9	4	7	6	7	8	3	6	14	17	12	14	13
Average Daily Census	3	4	3	4	4	4	4	1	3	9	9	10	8	8
LOS for discharged patients	3	23	12	50	15	115	37	36	0	23	44	55	39	46
Over/Under for Total Planned Beds	UNDER	UNDER	UNDER	UNDER	UNDER	UNDER	UNDER	UNDER	UNDER	OVER	OVER	OVER	OVER	OVER
GMPCC														
Total Level I Beds	-	-	-	-	-	-	8	8	8	8	8	8	8	8
Total Admissions during Month	-	-	-	-	-	-	8	0	0	2	2	3	6	2
Total Level 1 Discharges this Month	-	-	-	-	-	-	2	2	1	0	1	3	4	4
Total Level 1 Inpatients during Month	-	-	-	-	-	-	8	6	4	5	7	9	12	9
Average Daily Census	-	-	-	-	-	-	5	5	4	4	6	6	7	6
LOS for discharged patients	-	-	-	-	-	-	12	34	75	0	48	72	37	70
Over/Under for Total Planned Beds	-	-	-	-	-	-	UNDER	UNDER	UNDER	UNDER	UNDER	UNDER	UNDER	UNDER
FAHC														
Total Level I Beds	7	7	7	7	7	7	7	7	7	7	7			7
Total Admissions during Month	0	0	0	7	3	3	5	4	5	9	5	2	6	6
Total Level 1 Discharges this Month	0	0	0	4	4	1	3	6	5	6	3	4	6	5
Total Level 1 Inpatients during Month	1	1	1	8	6	6	10	10	10	14	12	12	12	13
Average Daily Census	1	1	1	4	3	4	6	6	6		9	9		8
LOS for discharged patients	0	0	0	9	12	4	28	46	17	77	15	71	55	54
Over/Under for Total Planned Beds	UNDER	UNDER	UNDER	UNDER	UNDER	UNDER	UNDER	UNDER	UNDER	UNDER	OVER	OVER	UNDER	OVER
Wait Times for Beds														
Average # People Waiting per Month										4	5	3	8	4
Wait Times in Days	1.0	1.1	1.4	1.8	1.1	0.8	0.8	1.5	1.4	2.0	1.7	1.4	2.4	1.1

Level 1 Stays by Inpatient Hospital August 2013



Level 1 Stays during August 2013

Hospital	Total Adult Beds	Total Stays	Highest Daily Census	Average Daily Census
Brattleboro Retreat	75	20	17	16
Fletcher Allen	27	13	9	8
Green Mountain	8	9	7	6
Rutland Regional	23	13	9	8
Statewide		55	40	38

Date of Report: September 9, 2013.

Analysis is based on the Inpatient Tracking Spreadsheet maintained by the Department of Vermont Health Access (DVHA). Includes psychiatric hospitalizations with Level 1 designations for hospitalizations occurring at the Brattleboro Retreat (BR), Fletcher Allen Medical Center (FAHC), Rutland Regional Medical Center (RRMC), and Green Mountain Psychiatric Care Center (GMPCC). Level 1 designation is reserved for patients with risk of imminent harm to self or others and requiring significant resources. Total stays reflects admissions and existing designated level 1 hospitalizations on unit during a specified month.

Intensive Residential Recovery Census Report
BEDS OCCUPIED August 2013

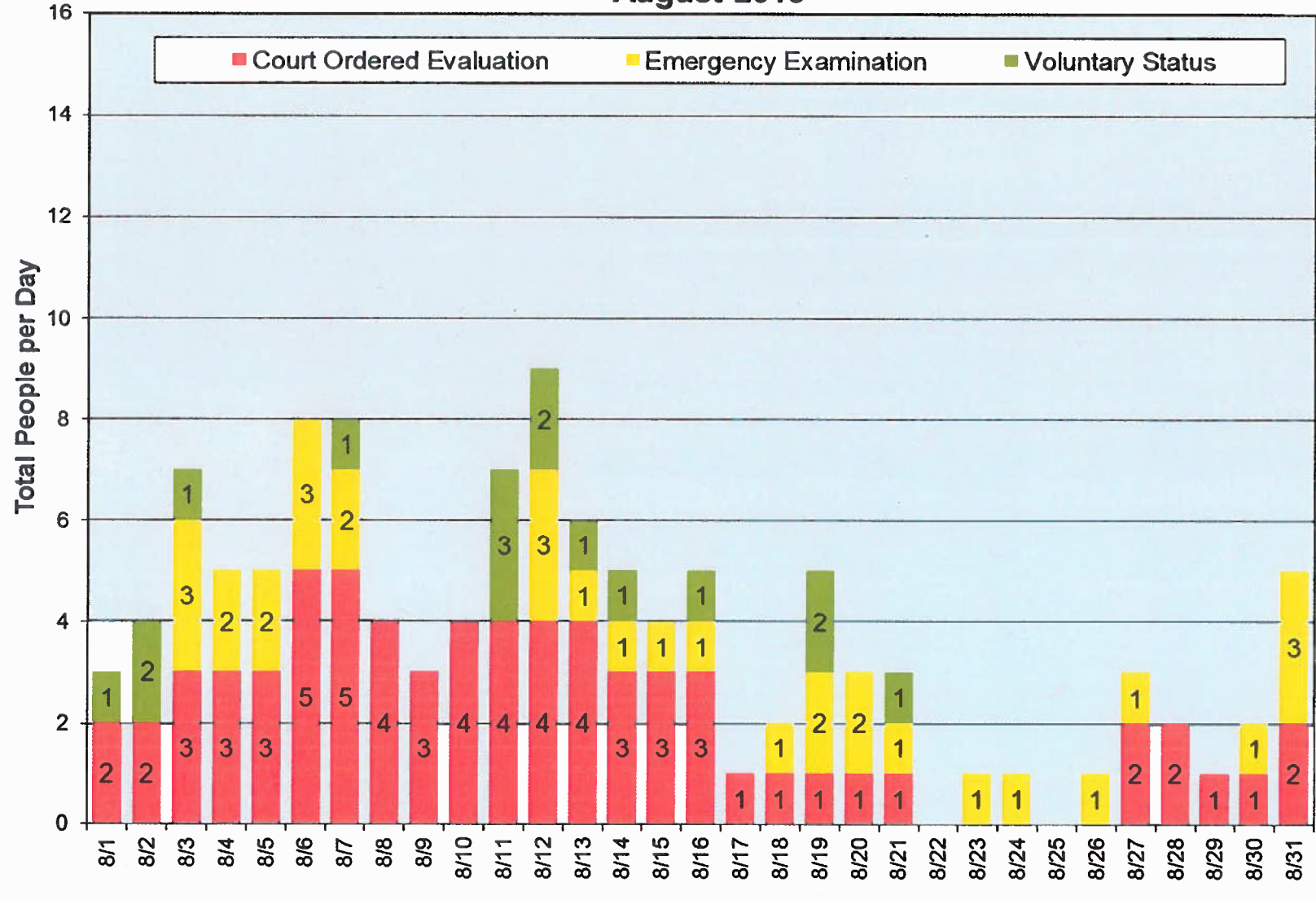
Intensive Residential - (Adults 18+)

	Hilltop		Meadowview		Middlesex		Second Spring		State Avg		State Avg Excluding Middlesex	
Total Beds	8		6		7		20		41		34	
	Census	Daily %	Census	Daily %	Census	Daily %	Census	Daily %	Census	Daily %	Census	Daily %
8/1/2013	8	100%	4	67%	5	71%	22	100%	39	91%	34	94%
8/2/2013	8	100%	4	67%	5	71%	22	100%	39	91%	34	94%
8/3/2013	8	100%	4	67%	4	57%	22	100%	38	88%	34	94%
8/4/2013	8	100%	4	67%	4	57%	22	100%	38	88%	34	94%
8/5/2013	8	100%	4	67%	4	57%	22	100%	38	88%	34	94%
8/6/2013	8	100%	4	67%	4	57%	22	100%	38	88%	34	94%
8/7/2013	8	100%	4	67%	4	57%	22	100%	38	88%	34	94%
8/8/2013	8	100%	4	67%	4	57%	22	100%	38	88%	34	94%
8/9/2013	8	100%	4	67%	4	57%	22	100%	38	88%	34	94%
8/10/2013	8	100%	4	67%	4	57%	22	100%	38	88%	34	94%
8/11/2013	8	100%	4	67%	4	57%	22	100%	38	88%	34	94%
8/12/2013	8	100%	4	67%	4	57%	22	100%	38	88%	34	94%
8/13/2013	8	100%	4	67%	5	71%	22	100%	39	91%	34	94%
8/14/2013	8	100%	5	83%	5	71%	22	100%	40	93%	35	97%
8/15/2013	8	100%	5	83%	5	71%	22	100%	40	93%	35	97%
8/16/2013	8	100%	5	83%	5	71%	22	100%	40	93%	35	97%
8/17/2013	8	100%	5	83%	5	71%	22	100%	40	93%	35	97%
8/18/2013	8	100%	5	83%	5	71%	22	100%	40	93%	35	97%
8/19/2013	8	100%	5	83%	5	71%	22	100%	40	93%	35	97%
8/20/2013	8	100%	5	83%	5	71%	20	100%	38	93%	33	97%
8/21/2013	8	100%	5	83%	5	71%	20	100%	38	93%	33	97%
8/22/2013	8	100%	5	83%	5	71%	20	100%	38	93%	33	97%
8/23/2013	8	100%	5	83%	6	86%	20	100%	39	95%	33	97%
8/24/2013	8	100%	5	83%	6	86%	20	100%	39	95%	33	97%
8/25/2013	8	100%	5	83%	6	86%	20	100%	39	95%	33	97%
8/26/2013	8	100%	5	83%	6	86%	20	100%	39	95%	33	97%
8/27/2013	8	100%	5	83%	6	86%	20	100%	39	95%	33	97%
8/28/2013	8	100%	5	83%	6	86%	20	100%	39	95%	33	97%
8/29/2013	8	100%	5	83%	6	86%	20	100%	39	95%	33	97%
8/30/2013	8	100%	5	83%	6	86%	20	100%	39	95%	33	97%
8/31/2013	7	88%	5	83%	6	86%	19	95%	37	90%	31	91%
Monthly Avg.	7.97		4.58		4.97		21.19		38.71		33.74	
Monthly % Occupancy	112.0%		89.1%		81.1%		99.8%		91.7%		95.8%	

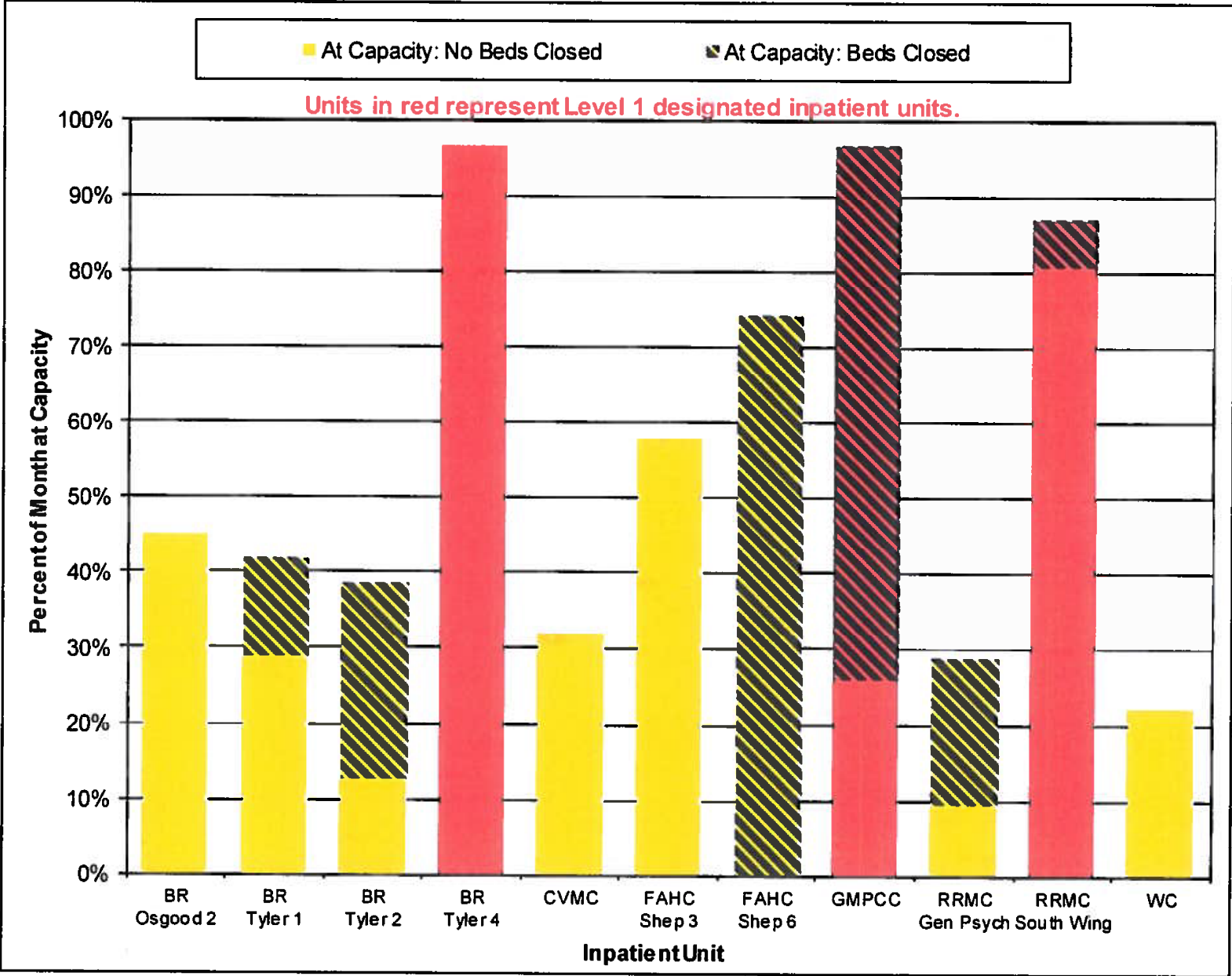
Based on data reported to the Vermont Department of Mental Health (DMH) by intensive recovery residence beds for adult care using the electronic bed boards system. Programs are expected to report to electronic bed boards a minimum of once per day to update their residential census.

Second Spring had 22 beds for intensive residential recovery until August 20, 2013, when two beds were reallocated for crisis services.

People Awaiting Inpatient Placement
August 2013



Designated Hospital Inpatient Capacity August 2013



Designated Hospital	Percent of Days in August			
	Not At Capacity	At Capacity		No Census Reported
		No Beds Closed	Beds Closed	
Brattleboro Retreat - Osgood 2	55%	45%	0%	0%
Brattleboro Retreat - Tyler 1	58%	29%	13%	0%
Brattleboro Retreat - Tyler 2	61%	13%	26%	0%
Brattleboro Retreat - Tyler 4	3%	97%	0%	0%
Center Vermont Medical Center	65%	32%	0%	3%
Fletcher Allen - Shepardson 3	39%	58%	0%	3%
Fletcher Allen - Shepardson 6	23%	0%	74%	3%
Green Mtn. Psychiatric Care Center	3%	26%	71%	0%
Rutland Regional - General Psych	71%	10%	19%	0%
Rutland Regional - South Wing*	13%	81%	6%	0%
Windham Center	74%	23%	0%	3%

Based on data reported to the Vermont Department of Mental Health (DMH) by designated hospitals (DH) for adult inpatient care using the electronic bed boards system. Beds at inpatient settings can be closed based on the clinical decision of the director of each inpatient unit.