



State of Vermont
Department of Mental Health
Commissioner's Office
Redstone Office Building
26 Terrace Street
Montpelier VT 05609-1101
<http://mentalhealth.vermont.gov/>

Agency of Human Services

[phone] 802-828-3824
[fax] 802-828-1717
[tty] 800-253-0191

MEMORANDUM

TO: Mental Health Oversight Committee
Health Care Oversight Committee
Joint Fiscal Committee

FROM: Paul Dupre, Commissioner of the Department of Mental Health

DATE: October 24, 2014

RE: October 2014 Monthly DMH Report to the Mental Health Oversight Committee

Attached please find the October, 2014 report to the Committees on Mental Health and Health Care consistent with reporting provided to the general assembly in April 2014.

I. Reporting Provided to General Assembly

- a. Utilization of Inpatient and Crisis Beds
- b. Level 1 Inpatient Utilization: Statewide and by Hospital
- c. Level 1 Inpatient Capacity and Utilization, Vermont Statewide
- d. People with Involuntary Admissions, Comparison of Level 1 and Non-Level 1
- e. Average Numbers of People Waiting Inpatient Placement
- f. Vermont State Hospital and Designated Hospitals, Emergency and Forensic Admissions
- g. Wait Times in Hours for Involuntary Inpatient Admission

II. Additional Reporting Requests

- a. Sheriff Supervisions in Emergency Departments
- b. Involuntary Non-Level 1 and Level 1 bed days
- c. Average Distance to Psychiatric Inpatient Care
- d. Hospital Admissions, Length of Stay, and Readmissions

III. Vermont Department of Mental Health System Snapshot (2012-2014)

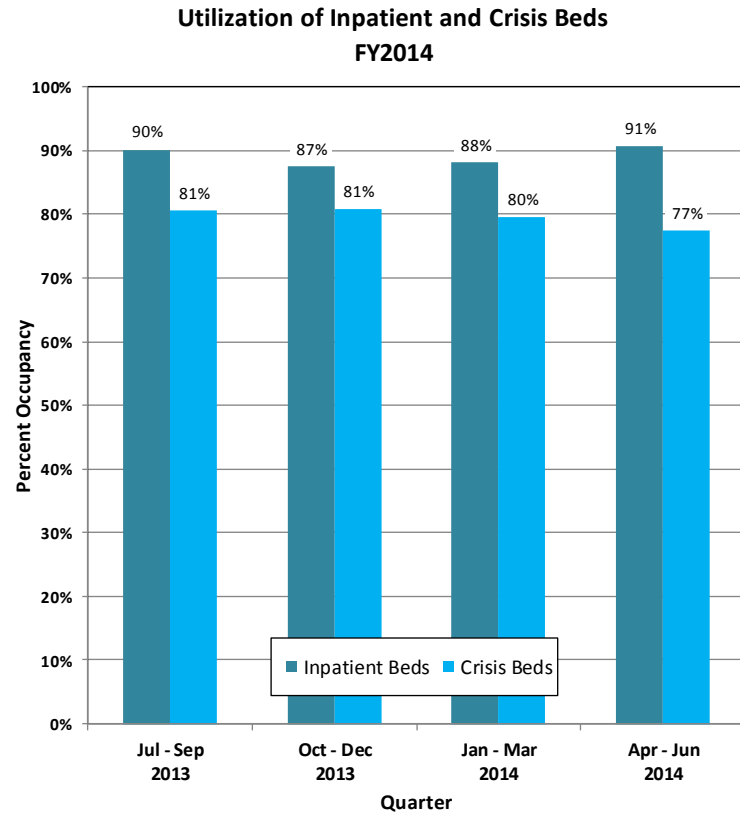
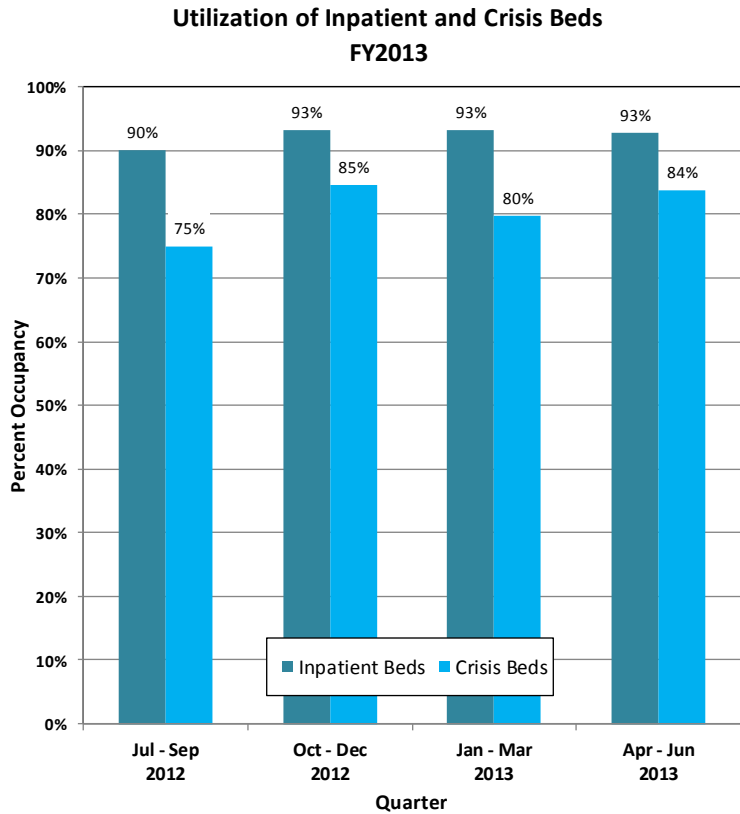
Respectfully submitted by the Department of Mental Health.

Please direct any inquiries for additional data collection or report content development to Paul Dupre, Commissioner of the Department of Mental Health; paul.dupre@state.vt.us.

Joint Legislative Mental Health Oversight and Health Care Committees
 Department of Mental Health July (2014)
 October 24, 2014

I. Reporting Provided to General Assembly

a. Utilization of Inpatient and Crisis Beds (FY2013-2015) (Part 1 of 2)

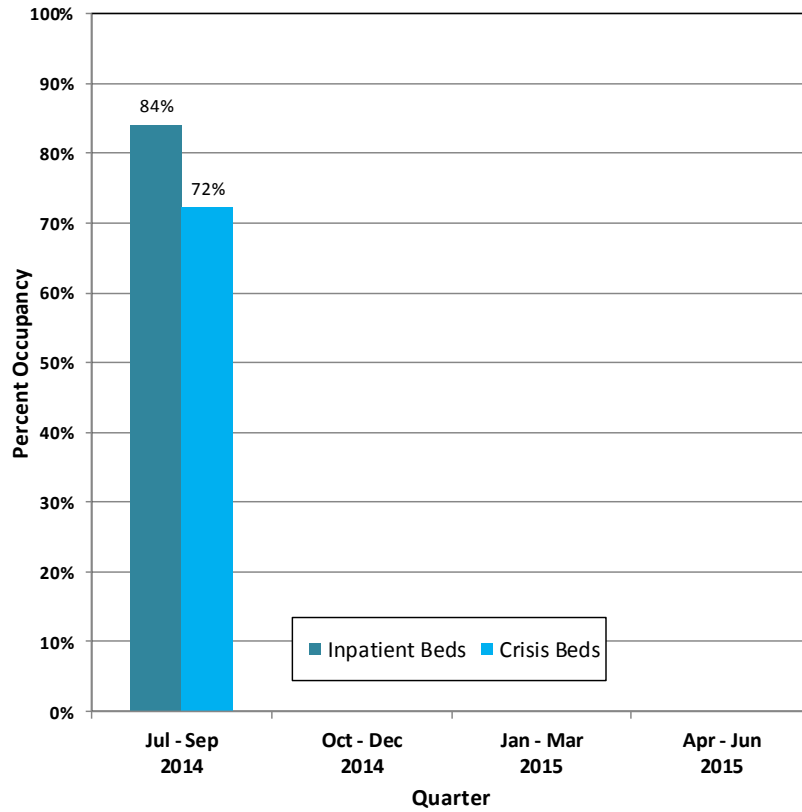


Based on data reported to the Vermont Department of Mental Health (DMH) by crisis bed programs and inpatient facilities for adult care using the electronic bed boards system. Programs are expected to report to electronic bed boards a minimum of once per day to update their census. State averages are adjusted to exclude programs on days where there were no updates submitted to the bed board.

Based on data reported to the Vermont Department of Mental Health (DMH) by crisis bed programs and inpatient facilities for adult care using the electronic bed boards system. Programs are expected to report to electronic bed boards a minimum of once per day to update their census. State averages are adjusted to exclude programs on days where there were no updates submitted to the bed board.

a. Utilization of Inpatient and Crisis Beds (FY2013-2015) (Part 2 of 2)

**Utilization of Inpatient and Crisis Beds
FY2015**



Based on data reported to the Vermont Department of Mental Health (DMH) by crisis bed programs and inpatient facilities for adult care using the electronic bed boards system. Programs are expected to report to electronic bed boards a minimum of once per day to update their census. State averages are adjusted to exclude programs on days where there were no updates submitted to the bed board.

b. Level 1 Inpatient Utilization: Statewide and by Hospital (2013-2014)

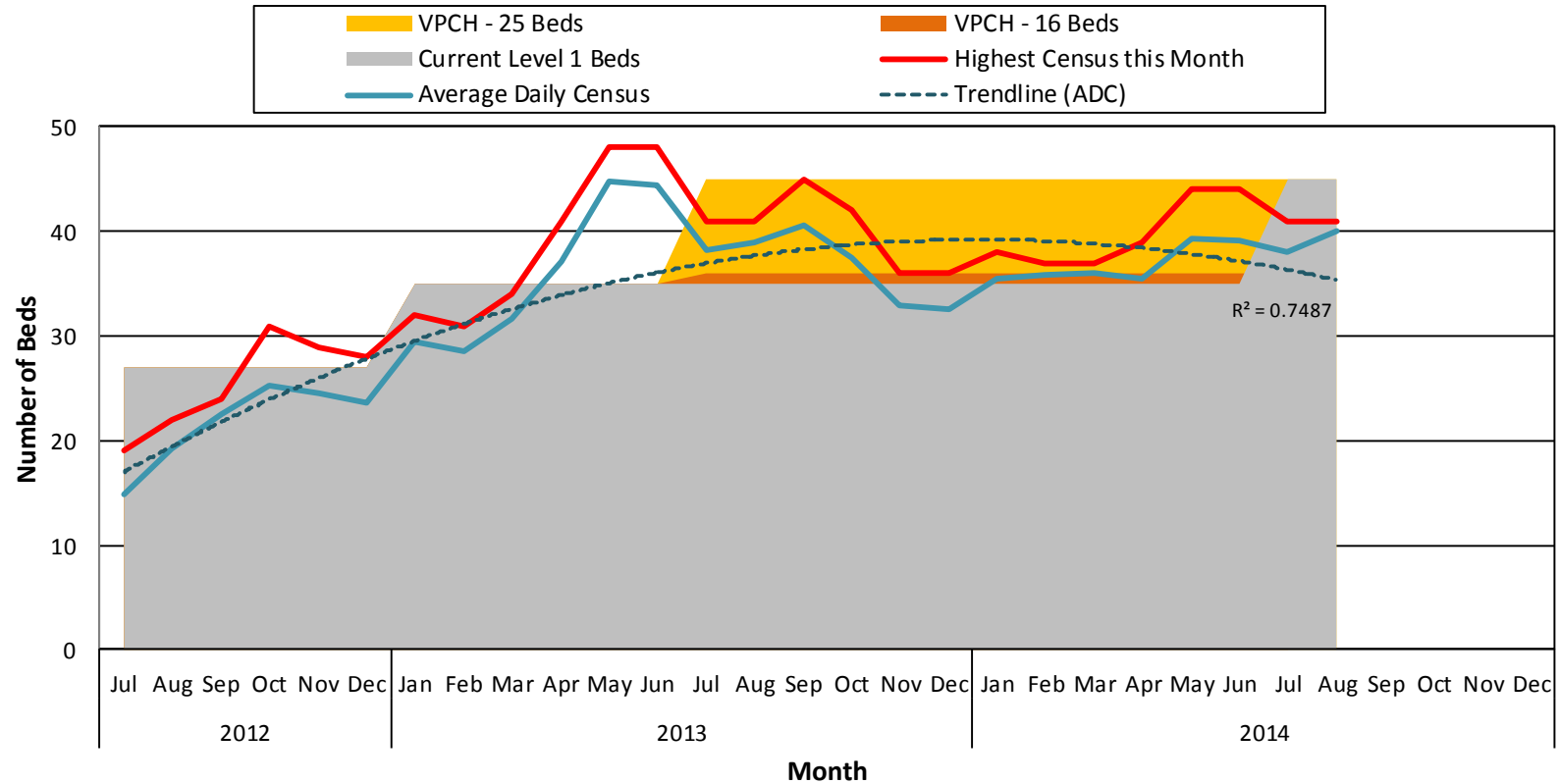
**Level 1 Inpatient Utilization: Statewide and By Hospital
2013-2014**

SYSTEM TOTAL	2013												2014											
	Jan	Feb	Mar	Apr	May	Jun	Jul	Aug	Sep	Oct	Nov	Dec	Jan	Feb	Mar	Apr	May	Jun	Jul	Aug	Sep	Oct	Nov	Dec
Total Level I Beds	35	35	35	35	35	35	35	35	35	35	35	35	35	35	35	35	35	35	35	45	45	45		
Average Daily Census	29	29	32	37	45	44	38	39	41	38	33	33	36	36	36	35	39	39	38	40	39			
Total Level I Admissions this Month	22	13	20	22	26	10	19	18	13	12	7	14	14	8	10	11	18	16	9	14	9			
Level 1 Admissions to Non-L1 Units	-	-	-	-	-	4	8	12	8	5	3	7	9	7	6	9	11	8	6	5	3			
Total Level 1 Discharges this Month	17	17	13	15	19	17	19	18	15	15	11	10	14	9	8	9	13	21	8	13	3			
Highest Census this Month	32	31	34	41	48	48	41	41	45	42	36	36	38	37	37	39	44	44	41	41	44			
Over/Under for Total Planned Beds	UNDER	UNDER	UNDER	OVER	OVER	OVER	OVER	OVER	OVER	OVER	UNDER	UNDER	OVER	OVER	OVER	OVER	OVER	OVER	UNDER	UNDER	UNDER			
BY HOSPITAL																								
Brattleboro Retreat																								
Total Level I Beds	14	14	14	14	14	14	14	14	14	14	14	14	14	14	14	14	14	14	14	14	14			
Average Daily Census	14	16	19	18	21	20	16	17	19	18	17	15	17	17	17	19	23	21	22	20	17			
Total Admissions during Month	7	9	10	3	11	3	3	4	4	5	1	5	3	2	3	7	8	7	4	3	6			
Level 1 Admissions to Non-L1 Units	-	-	-	-	-	2	1	3	4	2	1	4	2	2	3	7	6	4	3	1	3			
Total Level 1 Discharges this Month	7	7	7	5	7	8	3	3	6	3	3	4	2	3	1	6	11	2	4	0				
Highest Census this Month	16	18	20	20	22	22	17	18	20	20	18	18	17	18	18	23	25	23	23	21				
Over/Under for Total Planned Beds	OVER	OVER	OVER	OVER	OVER	OVER	OVER	OVER	OVER	OVER	OVER	OVER	OVER	OVER	OVER	OVER	OVER	OVER	OVER	OVER	OVER			
RRMC																								
Total Level I Beds	6	6	6	6	6	6	6	6	6	6	6	6	6	6	6	6	6	6	6	6	6			
Average Daily Census	4	1	3	9	9	10	8	8	8	7	6	6	6	7	9	10	10	9	8	10	9			
Total Admissions during Month	2	0	5	8	8	2	4	5	5	3	4	5	10	3	1	2	4	5	3	5	0			
Level 1 Admissions to Non-L1 Units	-	-	-	-	-	0	1	2	2	0	0	0	7	3	0	1	1	1	3	4	0			
Total Level 1 Discharges this Month	5	2	0	4	8	2	6	6	5	4	4	5	7	2	1	2	5	6	2	4	0			
Highest Census this Month	6	3	6	11	11	11	10	9	8	8	7	8	9	10	10	11	10	9	10	11	12			
Over/Under for Total Planned Beds	UNDER	UNDER	UNDER	OVER	OVER	OVER	OVER	OVER	OVER	OVER	UNDER	OVER	OVER	OVER	OVER	OVER	OVER	OVER	OVER	OVER	OVER			
VPCH																								
Total Level I Beds	8	8	8	8	8	8	8	8	8	8	8	8	8	8	8	8	8	8	25	25	25			
Average Daily Census	5	5	4	4	6	6	7	6	6	7	6	6	6	6	6	5	5	5	10	12				
Total Admissions during Month	8	0	0	2	2	3	6	2	2	1	0	1	1	1	3	1	2	1	2	6	3			
Level 1 Admissions to Non-L1 Units	-	-	-	-	-	-	-	-	-	-	-	-	-	-	-	-	-	-	-	-	-			
Total Level 1 Discharges this Month	2	2	1	0	1	3	4	4	1	2	0	1	1	2	2	2	1	2	0	1	0			
Highest Census this Month	7	6	4	5	6	6	8	7	7	7	6	6	6	6	7	6	7	7	12	10				
Over/Under for Total Planned Beds	UNDER	UNDER	UNDER	UNDER	UNDER	UNDER	UNDER	UNDER	UNDER	UNDER	UNDER	UNDER	UNDER	UNDER	UNDER	UNDER	UNDER	UNDER	UNDER	UNDER				
FAHC																								
Total Level I Beds	7	7	7	7	7	7	7	7	7	7	7	7	7	7	7	7	7	7	0	0	0			
Average Daily Census	6	6	6	6	9	9	7	9	8	6	5	5	5	3	3	2	2	5	2	1	1			
Total Admissions during Month	5	4	5	9	5	2	6	7	2	3	2	3	0	2	3	1	4	3	0	0	0			
Level 1 Admissions to Non-L1 Units	-	-	-	-	-	2	6	7	2	3	2	3	0	2	3	1	4	3	0	0	0			
Total Level 1 Discharges this Month	3	6	5	6	3	4	6	5	6	3	4	1	2	3	2	4	1	2	4	0	0			
Highest Census this Month	8	8	8	8	11	10	8	10	11	7	6	6	6	4	4	3	4	6	3	1	1			
Over/Under for Total Planned Beds	UNDER	UNDER	UNDER	UNDER	OVER	OVER	UNDER	OVER	OVER	UNDER	UNDER	UNDER	UNDER	UNDER	UNDER	UNDER	UNDER	OVER	OVER	OVER				

Analysis is based on the Inpatient Tracking Spreadsheet maintained by the Department of Vermont Health Access (DVHA). Includes psychiatric hospitalizations with Level 1 Designations for hospitalizations occurring at adult inpatient psychiatric units. Level 1 designation is reserved for patients with risk of imminent harm to self or others and requiring significant resources. 'Over/Under for Total Planned Beds' is computed using the difference between total level 1 beds and average daily census for each hospital and statewide. Unit of admission is available from June 2013 onward.

c. Level 1 Inpatient Capacity and Utilization, Vermont Statewide (FY2013-FY2015)

Level 1 Inpatient Capacity and Utilization Vermont Statewide



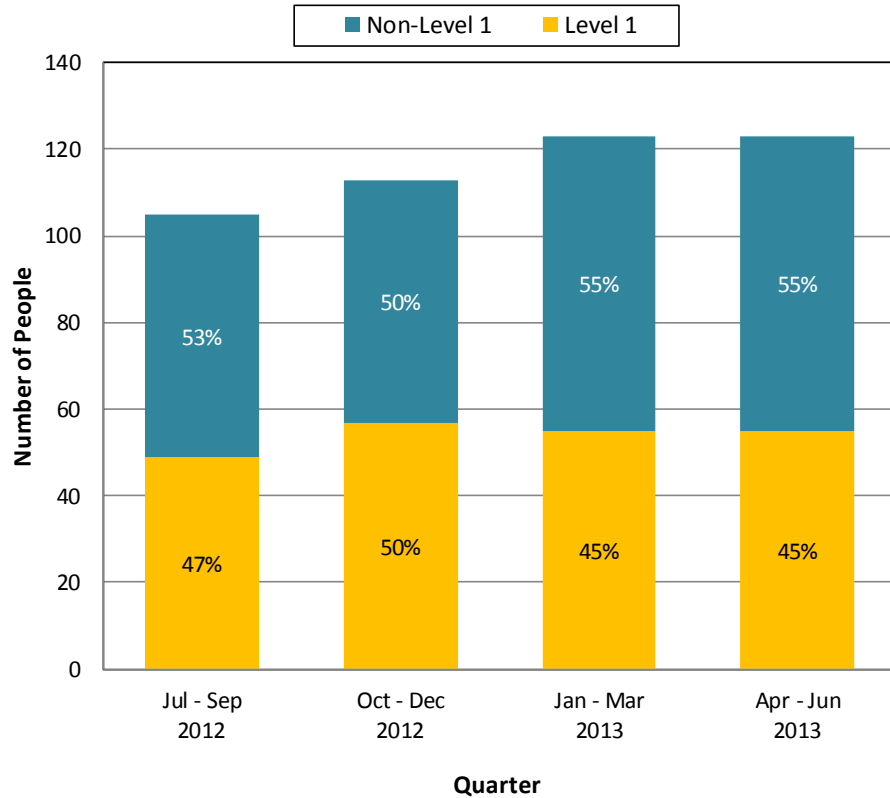
GMPC opened 8 Level 1 beds in January 2013

RRMC opened 6 Level 1 beds in April 2013

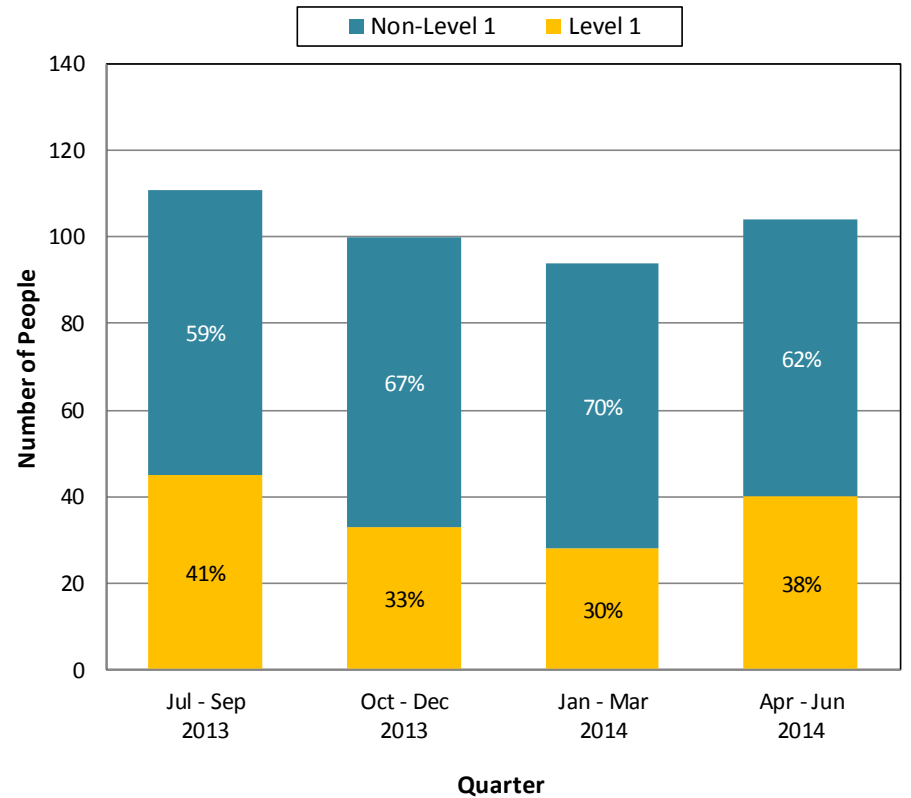
Analysis is based on the Inpatient Tracking Spreadsheet maintained by the Department of Vermont Health Access (DVHA). Includes psychiatric hospitalizations with Level 1 Designations for hospitalizations occurring at adult inpatient psychiatric units. Level 1 designation is reserved for patients with risk of imminent harm to self or others and requiring significant resources.

d. People with Involuntary Admissions, Comparison of Level 1 and Non-Level 1 (FY2013-FY2014)

**People with Involuntary Admissions
Comparison Level 1 and Non-Level 1
FY 2013**



**People with Involuntary Admissions
Comparison Level 1 and Non-Level 1
FY 2014**

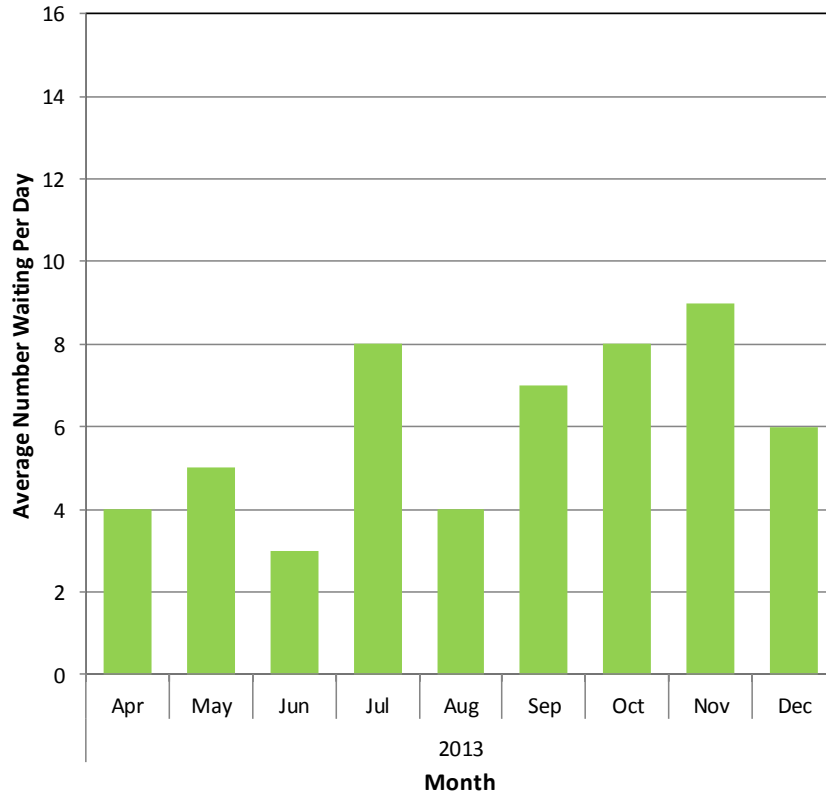


Analysis is based on the Inpatient Tracking Spreadsheet maintained by the Department of Vermont Health Access (DVHA) for psychiatric hospitalizations with Level 1 Designations, and adult inpatient psychiatric tracking spreadsheet maintained by the Department of Mental Health (DMH), Care Management Unit. Level 1 designation is reserved for patients with risk of imminent harm to self or others and requiring significant resources.

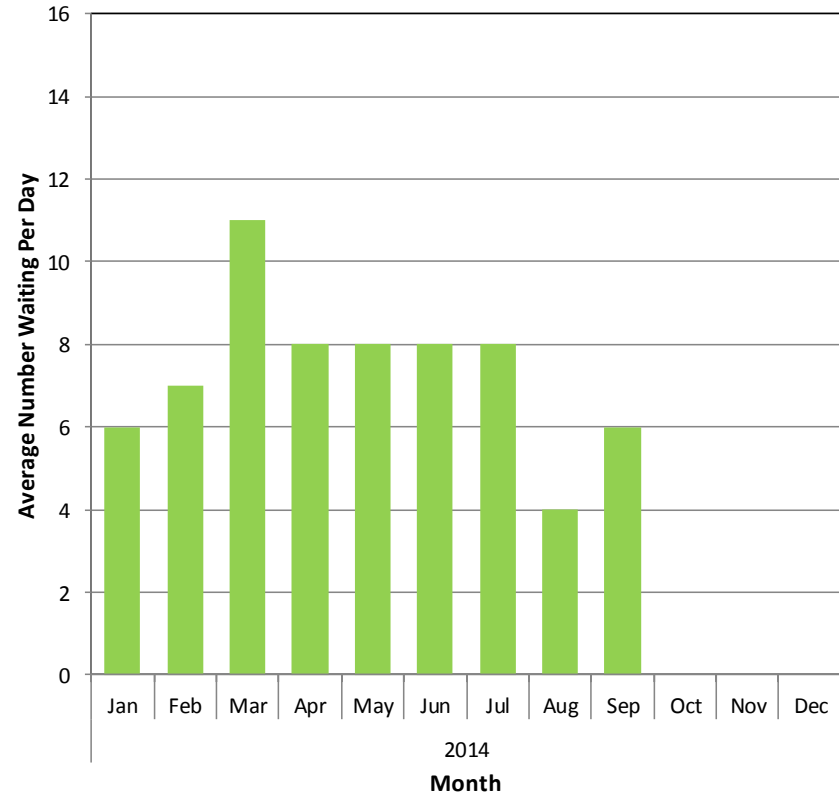
Analysis is based on the Inpatient Tracking Spreadsheet maintained by the Department of Vermont Health Access (DVHA) for psychiatric hospitalizations with Level 1 Designations, and adult inpatient psychiatric tracking spreadsheet maintained by the Department of Mental Health (DMH), Care Management Unit. Level 1 designation is reserved for patients with risk of imminent harm to self or others and requiring significant resources.

e. Average Numbers of People Waiting Inpatient Placement (2013-2014)

**Average Numbers of People Waiting Inpatient Placement
April 2013 - December 2013**



**Average Numbers of People Waiting Inpatient Placement
2014**

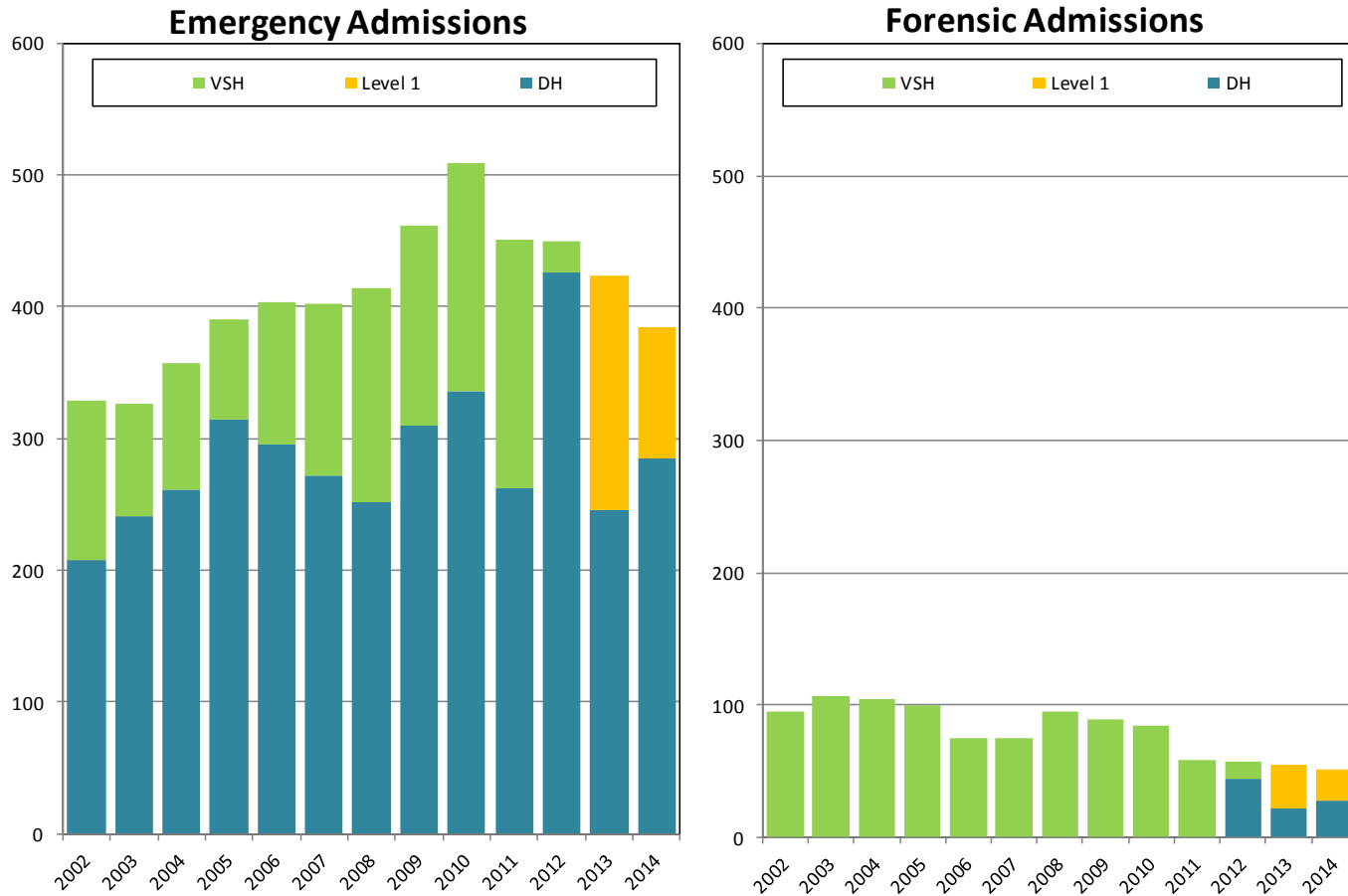


Based on the GMPCC admissions unit's morning update report and end-of-shift reports regarding persons waiting inpatient placement. Includes persons waiting in emergency departments inpatient placement or involuntary and persons waiting in department of corrections for inpatient placement on a court ordered forensic observation.

Based on the GMPCC admissions unit's morning update report and end-of-shift reports regarding persons waiting inpatient placement. Includes persons waiting in emergency departments inpatient placement or involuntary and persons waiting in department of corrections for inpatient placement on a court ordered forensic observation.

f. Vermont State Hospital and Designated Hospitals, Emergency and Forensic Admissions (FY2002-2014)

**Vermont State Hospital and Designated Hospitals
Emergency and Forensic Admissions
FY2002-FY2014**

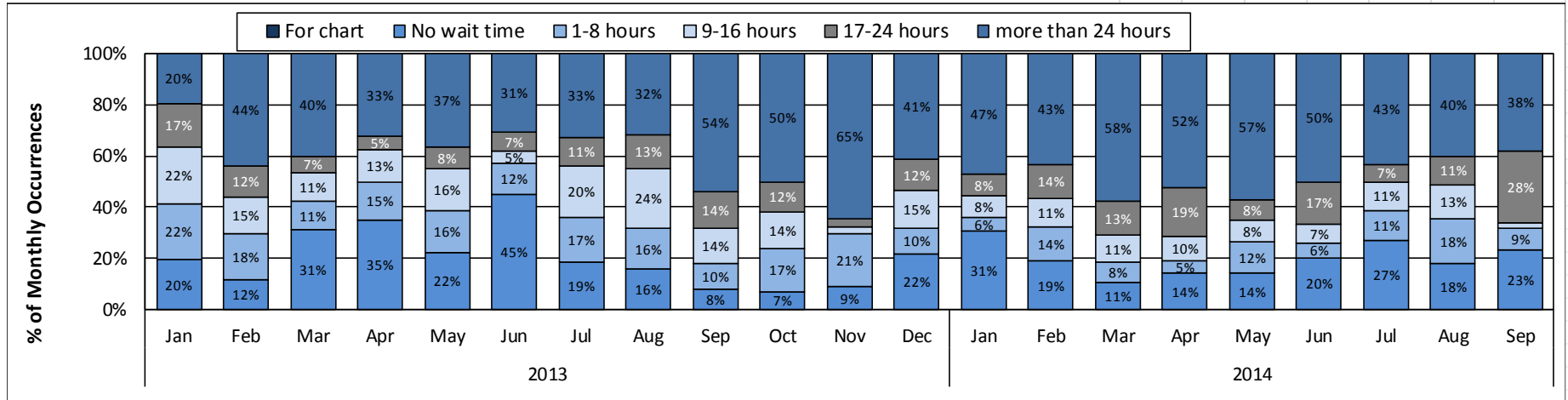


Analysis based on the Vermont State Hospital (VSH) Treatment Episode Database, and adult inpatient tracking maintained by the Department of Mental Health, Care Management Unit. Includes all admissions during FY2002 - FY2014 with a forensic legal status or emergency legal status at admission.

g. Wait Times in Hours for Involuntary Inpatient Admission (2013-2014)

Emergency Exams and Warrants, Court Ordered Forensic Observations, and Youth

**Wait Times in Hours for Involuntary Inpatient Admission
2013-2014**



	2013												2014								
Wait time	Jan	Feb	Mar	Apr	May	Jun	Jul	Aug	Sep	Oct	Nov	Dec	Jan	Feb	Mar	Apr	May	Jun	Jul	Aug	Sep
No wait time	8	4	14	14	11	19	12	6	4	3	3	9	11	7	4	6	7	11	12	8	11
1-8 hours	9	6	5	6	8	5	11	6	5	7	7	4	2	5	3	2	6	3	5	8	4
9-16 hours	9	5	5	5	8	2	13	9	7	6	1	6	3	4	4	4	4	4	5	6	1
17-24 hours	7	4	3	2	4	3	7	5	7	5	1	5	3	5	5	8	4	9	3	5	13
more than 24 hours	8	15	18	13	18	13	21	12	27	21	22	17	17	16	22	22	28	27	19	18	18
Total	41	34	45	40	49	42	64	38	50	42	34	41	36	37	38	42	49	54	44	45	47

Wait Time in Hours																						
Youth	Mean						27	17	23	21	48	32	8	19	17	39	30	45	49	18	28	24
	Median						30	16	15	18	47	26	8	17	14	28	28	28	38	17	35	21
EEs/Wrts	Mean	17	36	29	24	35	24	33	18	72	43	60	33	40	56	80	39	48	56	56	39	45
	Median	12	16	14	6	14	3	13	11	31	19	39	14	17	17	39	21	27	20	16	16	19
OBS	Mean	16	48	77	223	87	75	277	269	468	404	525	325	580	652	641	753	288	447	24	55	412
	Median	0	48	0	229	69	34	278	277	489	354	495	281	580	532	641	613	311	219	0	74	412
Total	Mean	17	39	32	49	40	28	61	46	81	86	111	67	68	132	102	106	67	84	51	40	58
	Median	12	19	14	8	14	3	15	15	25	25	46	17	19	19	39	26	28	26	14	16	19

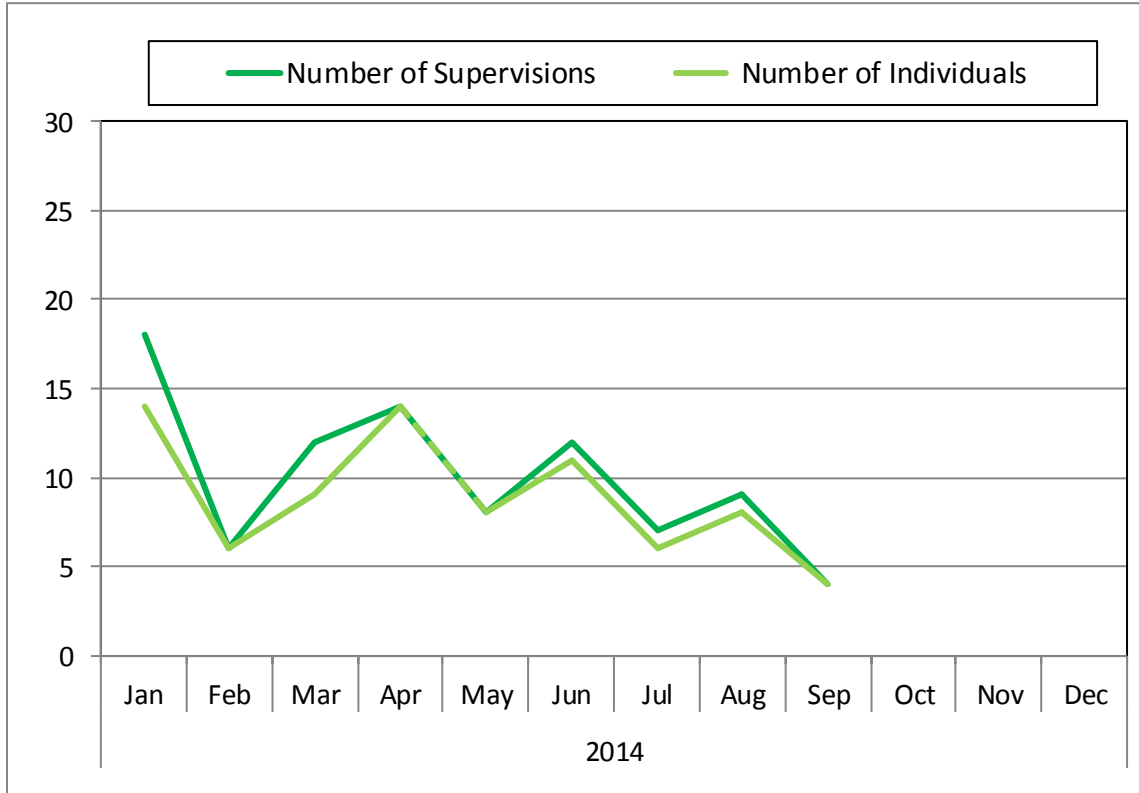
Analysis conducted by the Vermont Department of Mental Health Research & Statistics Unit.

Analysis based on data maintained by the VPCH admissions department from paperwork submitted by crisis, designated agency, and hospital screeners. Wait times are defined from determination of need to admission to disposition, less time for medical clearance, for persons on warrant for immediate examination, applications for emergency exam, court ordered forensic observations, and youth waiting for inpatient admission. Wait times are point in time and are categorized based on month of service, not month of disposition, for clients who had a disposition to a psychiatric inpatient unit.

II. Additional Reporting Requests

a. Sheriff Supervisions in Emergency Departments

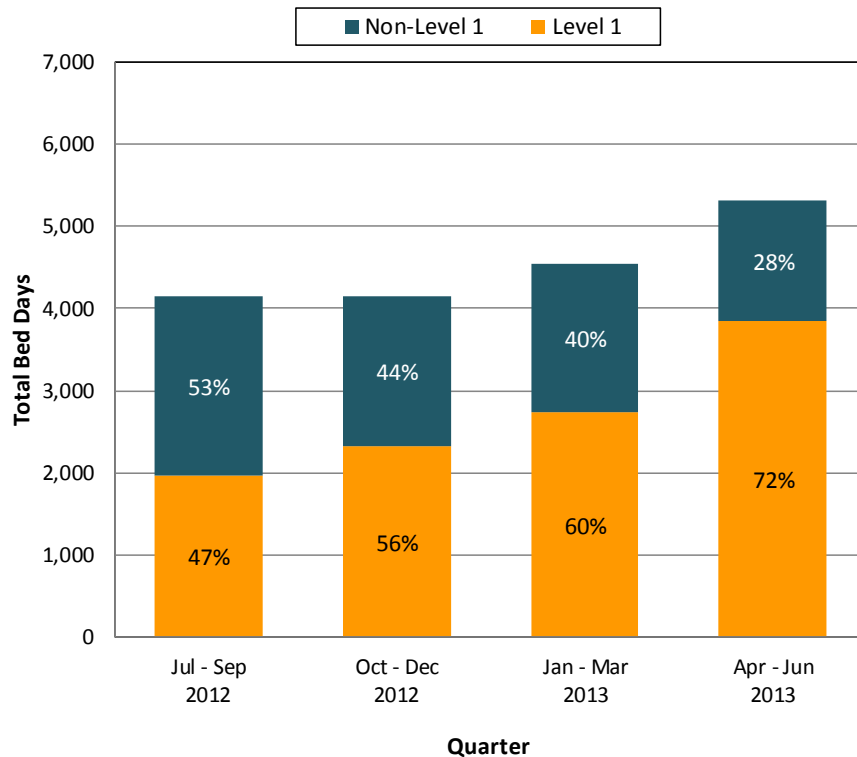
Sheriff Supervisions in Emergency Departments 2014



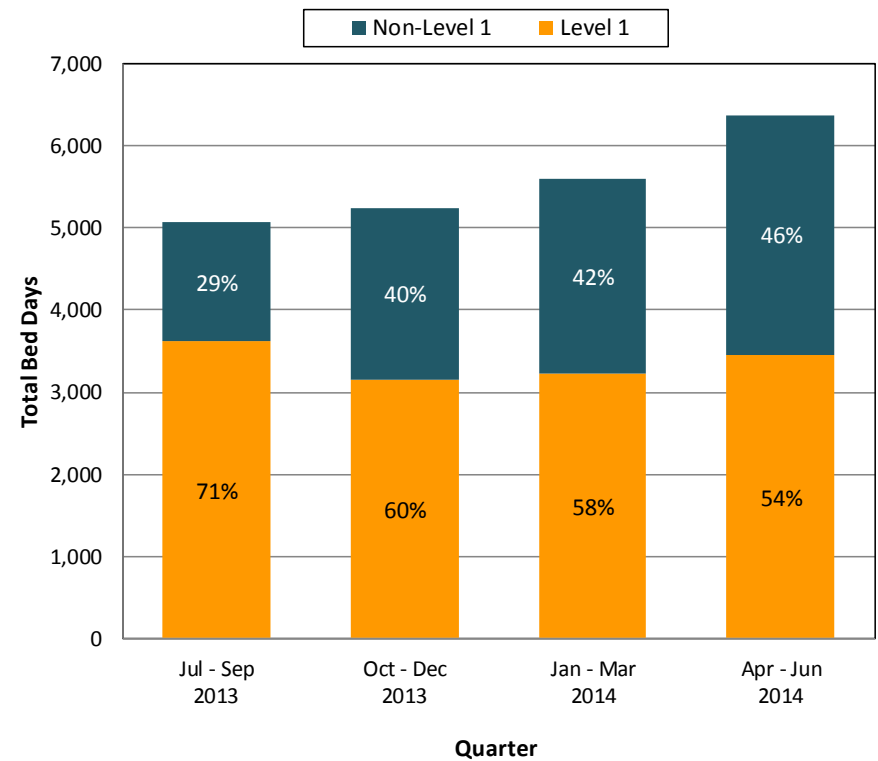
Based on sheriff supervision invoices received by the Department of Mental Health Business Office for supervision of individuals in emergency departments. Data are typically reported two months behind to allow receipt of all Sheriff invoices, however, preliminary counts for the previous month are presented.

b. Involuntary Non-Level 1 and Level 1 bed days (FY2013-2014)

**People with Involuntary Admissions: Bed Days
Comparison Level 1 and Non-Level 1
FY 2013**



**People with Involuntary Admissions: Bed Days
Comparison Level 1 and Non-Level 1
FY 2014**

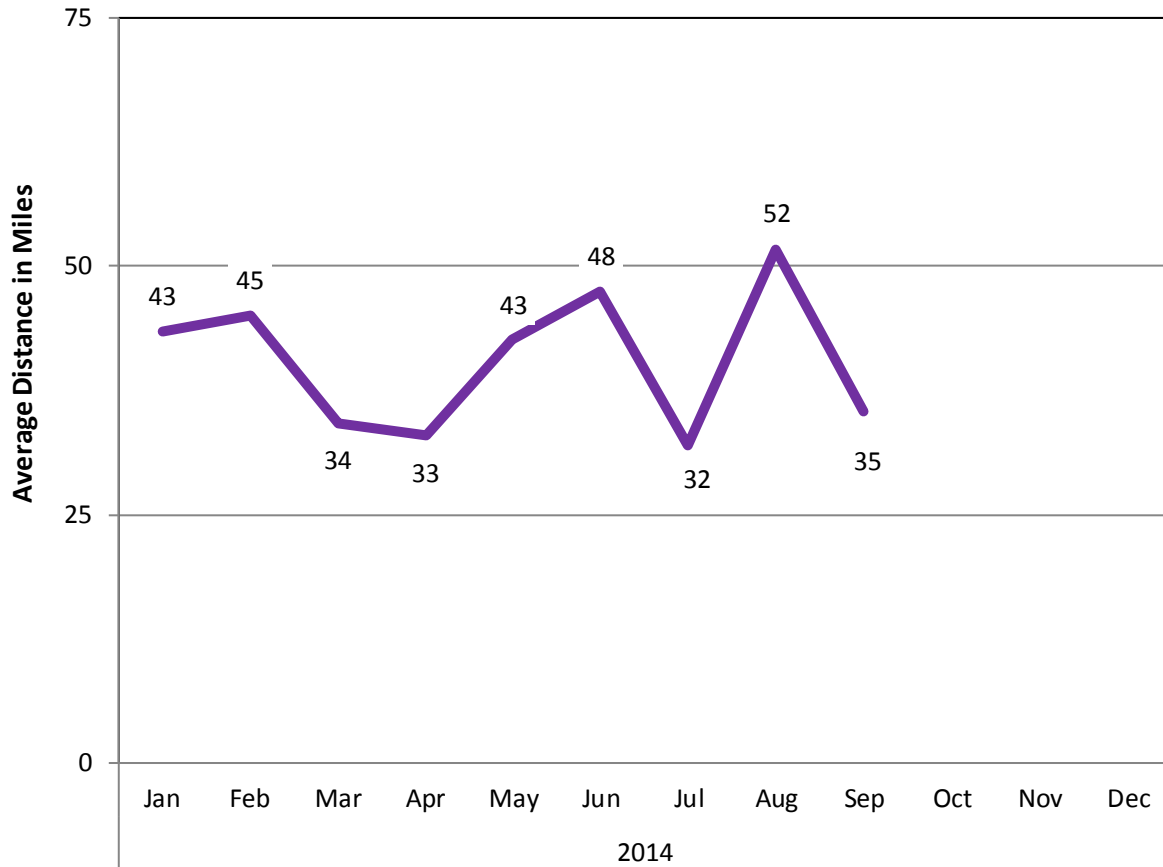


Analysis is based on the Inpatient Tracking Spreadsheet maintained by the Department of Vermont Health Access (DVHA) for psychiatric hospitalizations with Level 1 Designations, and adult inpatient psychiatric tracking spreadsheet maintained by the Department of Mental Health (DMH), Care Management Unit. Level 1 designation is reserved for patients with risk of imminent harm to self or others and requiring significant resources. Bed days for Level 1 stays can include inpatient days before the Level 1 determination was made due to the payment structure of Level 1 inpatient stays.

Analysis is based on the Inpatient Tracking Spreadsheet maintained by the Department of Vermont Health Access (DVHA) for psychiatric hospitalizations with Level 1 Designations, and adult inpatient psychiatric tracking spreadsheet maintained by the Department of Mental Health (DMH), Care Management Unit. Level 1 designation is reserved for patients with risk of imminent harm to self or others and requiring significant resources. Bed days for Level 1 stays can include inpatient days before the Level 1 determination was made due to the payment structure of Level 1 inpatient stays.

c. Average Distance to Psychiatric Inpatient Care (2014)

**Average Distance to Adult Psychiatric Inpatient Care
From Home to Designated Hospital for Involuntary Stays
2014**



**Month of Admission
2014**

	Jan	Feb	Mar	Apr	May	Jun	Jul	Aug	Sep	Oct	Nov	Dec
Total Cases*	30	26	33	33	41	44	41	38	37			
Average Distance in Miles	43	45	34	33	43	48	32	52	35			

Analysis based on data maintained by the VPCH admissions department from paperwork submitted by crisis, designated agency, and hospital screeners for adults admitted to involuntary inpatient care at Designated Hospitals. Total cases includes persons admitted involuntarily to psychiatric inpatient units, but may also include patients who convert to voluntary upon arrival to the unit. Cases and averages exclude patients with no residency information and patients reported as residing out of state.

d. Hospital Admissions, Length of Stay, and Readmissions

**Adult Involuntary Inpatient Utilization: Statewide
2014**

SYSTEM TOTAL	2014							
	Jan	Feb	Mar	Apr	May	Jun	Jul	Aug
Total Admissions this Month	32	29	34	37	43	48	45	43
Total Discharges this Month*	35	24	33	35	45	42	41	46
Length of Stay for Discharged Clients*	44.5	48.8	39.4	34.7	64.0	41.3	27.9	26.7
30 Day Readmission Rate*	3%	8%	0%	9%	11%	10%	10%	4%

Analysis is based on the adult inpatient psychiatric tracking spreadsheet maintained by the Department of Mental Health (DMH), Care Management Unit.

* Administrative staff and care managers at the Department are working to complete data records. While a majority of FY2014 records are entered, staff are still working to close out records with discharge dates. Once all records for FY2014 are resolved, the Department will be able to report length of stay and 30 day readmission rates as requested.

This request has been updated from last month’s report to include the Department’s progress in entering involuntary admissions events into our data collection spreadsheet. Currently, there are approximately 80 records without discharge dates, which accurately reflects the number of involuntary patients receiving inpatient care.

Data collection regarding involuntary admissions is a multi-unit manual effort at present. Data for involuntary admissions are collected by the Department’s Care Management Unit with assistance from administrative staff. At the beginning of each month, the Research and Statistics Unit provides Care Management with data collected on screenings for inpatient hospitalization. Care management reviews this list and adds records that may have been missed. Care management then coordinates with Utilization Review to capture Level 1 status for each patient. Data for inpatient stays typically takes two months to capture (i.e. August data completed in October). This delay represents Department efforts to audit the data collection and spreadsheet entries for completeness and accuracy. This delay also allows the Department to collect as many discharge dates as possible, since the median length of stay for inpatient psychiatric care is 14 days.

III. Vermont Department of Mental Health System Snapshot (2012-2014)



Vermont Department of Mental Health System Snapshot (February 12, 2014)

Reporting Category	2012											
	FY12 Q3			FY12 Q4			FY13 Q1			FY13 Q2		
	Jan	Feb	Mar	Apr	May	Jun	Jul	Aug	Sep	Oct	Nov	Dec
Adult Inpatient Hospital												
% Occupancy	-	-	-	89%	92%	90%	89%	89%	91%	91%	88%	89%
Avg. Daily Census	-	-	-	-	-	-	-	-	-	-	-	-
Adult Crisis Beds												
% Occupancy	-	-	-	72%	80%	80%	77%	75%	72%	78%	82%	86%
Avg. Daily Census	-	-	-	-	-	-	-	-	-	-	-	-
Applications for Involuntary Hospitalizations (EE)												
Youth (0-17)	-	-	-	-	-	-	-	-	-	-	-	-
Adults	-	-	-	28	45	32	43	40	43	44	39	32
Total adults admitted with Level 1 Designation (% of Total applications)	-	-	-	-	-	-	30%	28%	23%	39%	28%	41%
Total adults admitted with CRT Designation (% of Total applications)	-	-	-	7	15	18	18	11	24	22	14	11
	-	-	-	25%	33%	56%	42%	28%	56%	50%	36%	34%
Instances when Placement Unavailable & Client Held in ED												
Involuntary Medications												
# Applications	4	3	7	3	6	4	4	3	4	6	0	2
# Granted Orders	3	2	5	2	1	3	4	2	1	6	-	2
Mean time to decision (days)	20	16	19	15	22	20	11	15	14	13	-	11
Court Ordered Forensic Observation Screenings												
# Requested	-	-	-	-	-	-	17	19	11	8	8	14
# Inpatient Ordered	-	-	-	-	-	-	4	6	4	5	6	9
VT Resident Suicides												
Youth (0-17)												
Total	0	0	0	0	0	0	0	1	1	0	0	0
# with DA contact within previous year	0	0	0	0	0	0	0	0	0	0	0	0
Adults (18+)												
Total	7	6	11	8	9	7	6	4	7	4	3	9
# with DA contact within previous year	2	1	2	3	1	2	2	1	1	1	0	3
Housing												
# Clients permanently housed as a result of new Act79 housing funding	-	-	-	5	10	6	18	20	13	8	0	
Involuntary Transportation												
Adults (total transports)												
# of Transports	24	14	19	11	23	15	14	13	17	8	15	15
% Non-Restrained	33%	36%	11%	27%	22%	47%	57%	46%	35%	38%	67%	47%
% Restrained	67%	57%	89%	73%	74%	40%	43%	54%	65%	63%	33%	53%
% of Restrained using metal restraints	46%	50%	63%	73%	48%	20%	21%	31%	35%	13%	20%	27%
% of Restrained using soft restraints	21%	7%	26%	0%	26%	20%	21%	23%	29%	50%	13%	27%
Children Under 10 (total transports)												
# of Transports	-	-	-	-	-	-	5	1	0	2	1	1
% Non-Restrained	-	-	-	-	-	-	80%	100%	-	100%	0%	100%
% Restrained	-	-	-	-	-	-	20%	0%	0%	0%	100%	0%
% of Restrained using metal restraints	-	-	-	-	-	-	0%	0%	0%	0%	100%	0%
% of Restrained using soft restraints	-	-	-	-	-	-	100%	0%	0%	0%	0%	0%
CRT Employment												
% Employed	14%			15%			15%			16%		
Wages per employed client	\$2,308			\$2,363			\$2,379			\$2,486		



Vermont Department of Mental Health System Snapshot (April 14, 2014)

*data forthcoming

2013

Reporting Category	FY13 Q3			FY13 Q4			FY14 Q1			FY14 Q2		
	Jan	Feb	Mar	Apr	May	Jun	Jul	Aug	Sep	Oct	Nov	Dec
Adult Inpatient Hospital												
% Occupancy	94%	91%	92%	84%	87%	93%	88%	89%	89%	89%	90%	83%
Avg. Daily Census	137	132	136	134	135	146	138	139	139	143	149	137
% Occupancy at No Refusal Units							100%	96%	99%	99%	99%	98%
Avg. Daily Census							28	27	28	28	28	27
Adult Crisis Beds												
% Occupancy	77%	79%	83%	82%	84%	85%	82%	81%	79%	81%	83%	79%
Avg. Daily Census	27	28	29	29	31	31	30	31	31	31	32	31
Applications for Involuntary Hospitalizations (EE)												
Youth (0-17)	-	-	-	9	10	6	9	7	15	6	4	2
Adults	50	32	55	41	55	39	65	32	43	43	37	39
Total adults admitted with CRT	13	13	27	19	14	11	15	12	9	7	11	19
Designation (% of Total applications)	26%	41%	49%	46%	25%	28%	23%	38%	21%	16%	30%	49%
Total Level 1 Admissions	22	13	20	22	26	10	19	18	13	11	7	14
Instances when Placement Unavailable & Adult Client Held in ED												
	27	21	43	27	38	24	38	16	34	29	30	23
Adult Involuntary Medications												
# Applications	2	3	3	2	9	4	5	7	5	10	9	4
# Granted Orders	2	3	2	2	5	3	5	6	3	4	6	3
Mean time from filing date to decision date (days)	22	12	20	27	19	17	20	14	12	17	9	10
Court Ordered Forensic Observation Screenings												
# Requested	11	13	9	10	11	11	22	20	19	16	13	9
# Inpatient Ordered	3	7	5	5	6	6	11	8	7	5	6	5
VT Resident Suicides												
Youth (0-17)												
Total	0	0	0	0	0	2	0	0	0	1	0	1
# with DA contact within previous year	-	-	-	-	-	1	-	-	-	0	-	1
Adults (18+)												
Total	4	6	10	8	10	5	8	10	14	13	8	6
# with DA contact within previous year	0	3	2	2	1	0	2	1	4	4	1	1
Housing												
# Clients permanently housed as a result of new Act79 housing funding	18	21	14	11	14	5	0	5	0	2	0	0
Total # enrolled to date	98	119	133	144	158	169	169	176	176	168	123	123
Involuntary Transportation												
Adults (total transports)												
# of Transports	19	17	18	11	18	13	18	12	18	15	17	17
% Non-Restrained	58%	94%	61%	82%	78%	85%	72%	75%	83%	100%	94%	65%
% Restrained	42%	6%	39%	18%	22%	15%	28%	25%	17%	0%	6%	35%
% all transports using metal restraints	16%	6%	6%	9%	6%	8%	17%	25%	17%	0%	6%	18%
% all transports using soft restraints	26%	0%	33%	9%	17%	8%	11%	0%	0%	0%	0%	18%
Youth Under 10 (total transports)												
# of Transports	3	3	0	0	0	0	0	0	2	0	0	0
% Non-Restrained	100%	100%	-	-	-	-	-	-	100%	-	-	-
% Restrained	0%	0%	-	-	-	-	-	-	0%	-	-	-
% all transports using metal restraints	0%	0%	-	-	-	-	-	-	0%	-	-	-
% all transports using soft restraints	0%	0%	-	-	-	-	-	-	0%	-	-	-
CRT Employment												
% Employed	15%			16%			17%			15%		
Wages per employed client	\$2,318			\$2,457			\$2,298			\$2,456		



Vermont Department of Mental Health System Snapshot (October 14, 2014)

*data forthcoming

2014

Reporting Category	FY14 Q3			FY14 Q4			FY15 Q1			FY15 Q2		
	Jan	Feb	Mar	Apr	May	Jun	Jul	Aug	Sep	Oct	Nov	Dec
Adult Inpatient Hospital												
% Occupancy	87%	88%	89%	91%	93%	89%	82%	85%	86%			
Avg. Daily Census	146	147	151	153	157	150	153	159	162			
% Occupancy at No Refusal Units	98%	98%	100%	100%	99%	100%	63%	75%	84%			
Avg. Daily Census	28	27	28	28	28	28	29	34	38			
Adult Crisis Beds												
* VPCH gradual opening of 25 beds												
% Occupancy	83%	79%	77%	77%	77%	76%	76%	66%	75%			
Avg. Daily Census	32	30	29	29	29	29	29	25	28			
Applications for Involuntary Hospitalizations (EE)												
Youth (0-17)	5	4	7	5	9	10	4	3	8			
Adults	38	32	35	46	42	46	45	52	49			
Total adults admitted with CRT	9	11	8	9	9	14	15	10	15			
Designation (% of Total applications)	24%	34%	23%	20%	21%	30%	33%	19%	31%			
Total Level 1 Admissions	14	8	10	11	18	16	9	14	9			
Instances when Placement Unavailable & Adult Client Held in ED												
	19	19	27	27	30	33	28	29	28			
Adult Involuntary Medications												
# Applications	6	8	7	4	4	5	8	6	5			
# Granted Orders	5	4	6	4	4	4	7	2	1			
Mean time from filing date to decision date (days)	14	17	16	10	14	9	13	10	7			
Court Ordered Forensic Observation Screenings												
# Requested	6	11	12	14	8	10	11	10	5			
# Inpatient Ordered	2	7	3	5	5	4	3	4	2			
VT Resident Suicides												
Youth (0-17)												
Total	2	0	0	0	0	1	0	3	*			
# with DA contact within previous year	2	0	0	0	0	1	0	1	*			
Adults (18+)												
Total	11	5	6	6	6	7	8	10	*			
# with DA contact within previous year	1	1	0	2	2	3	1	2	*			
Housing												
# Clients permanently housed as a result of new Act79 housing funding	1	2	3	3	4	1	1	1	2			
Total # enrolled to date	124	122	124	131	131	131	132	133	129			
Involuntary Transportation												
Adults (total transports)												
# of Transports	13	15	13	16	15	22	14	19	*			
% Non-Restrained	85%	87%	69%	81%	67%	59%	71%	79%	*			
% Restrained	15%	13%	31%	19%	33%	41%	29%	21%	*			
% all transports using metal restraints	8%	7%	15%	6%	7%	32%	0%	5%	*			
% all transports using soft restraints	8%	7%	15%	13%	27%	9%	29%	16%	*			
Youth Under 18 (total transports)												
# of Transports	4	5	7	4	3	5	6	4	*			
% Non-Restrained	100%	100%	100%	100%	100%	100%	83%	75%	*			
% Restrained	0%	0%	0%	0%	0%	0%	17%	25%	*			
% all transports using metal restraints	0%	0%	0%	0%	0%	0%	17%	25%	*			
% all transports using soft restraints	0%	0%	0%	0%	0%	0%	0%	0%	*			
CRT Employment												
% Employed		16%			*			*				
Wages per employed client		\$2,301										



Vermont Department of Mental Health System Snapshot

Definitions

Inpatient Hospital	The hospitals designated by the Commissioner of Mental Health for involuntary psychiatric treatment: Brattleboro Retreat (BR), Central Vermont Medical Center (CVMC), Fletcher Allen Health Care (FAHC), Rutland Regional Medical Center (RRMC), Windham Center at Springfield Hospital (WC), and Vermont Psychiatric Care Hospital (VPCH). Adult Inpatient Units at VPCH, RRMC - South Wing, and Brattleboro Retreat - Tyler 4. The units designated as no refusal units: BR - Tyler 4, RRMC - South Wing, VPCH.
Designated Agency Crisis Bed	Emergency Services beds intended to provide crisis intervention, respite, or hospital diversion that are staffed by and under the supervision of a designated community mental health agency (DA). Statewide averages are adjusted to exclude programs on days where there were no updates submitted to the bed board.
Court-ordered Forensic Observations	Forensic patients are designated when there is criminal justice involvement and when there are questions concerning competency/sanity of an individual being arraigned. A screening is requested by a community mental health agency pursuant to §4815 13 VSA. Numbers represent a point in time count mid-month.
Emergency Examination (EE)	An application for emergency examination has been completed for involuntarily admission (§7508 of 18 VSA) to a designated hospital for psychiatric treatment (danger to self or others) subsequent to an evaluation by community mental health agency screener & medical doctor.
Restrained Transport (formerly called Secure)	Transport via law enforcement utilizing either metal or soft restraints.
Non-Restrained Transport (formerly called Non-Secure)	Transport not utilizing restraints; this can include plain clothed law enforcement, Designated Agency transport teams, or other means of transport such as family members.
VT Resident Suicides	Based on PRELIMINARY data from the Vital Statistics System maintained by Vermont Department of Health and Monthly Service Report (MSR) data provided by the Department of Mental Health (DMH). Cross-sector data analysis was conducted using LinkPlus, a probabilistic statistical linkage software developed by the CDC for linking records across databases. MSR data includes services provided by community designated agencies for clients served by DAs within the year prior to death. Primary Program is defined as the primary program assignment on the client's last service with DMH. Monthly counts are subject to change as more information is made available.
Housing	Based on the number of applications approved, in the months the program has been operating and the total approved to date. Enrollment to date numbers do not necessarily sum to total numbers housed. Data cleaning is on-going.

Adult Inpatient Utilization and Bed Closures: Page 1 of 2

System Total and Level 1 Units 2014

All Units
 Level 1 Units
 Non-Level 1 Adult Units

	Jan	Feb	Mar	Apr	May	Jun	Jul	Aug	Sep	Oct	Nov	Dec
ADULT INPATIENT UNITS												
Total Beds	169	169	169	169	169	169	188	188	161			
Average Daily Census	137	147	151	153	155	148	154	159	142			
Percent Occupancy	83%	87%	89%	91%	92%	88%	82%	85%	88%			
# Days at Occupancy	0	0	0	0	0	0	0	0	0			
# Days with Closed Beds	31	28	31	30	31	19	30	31	30			
Average # of Closed Beds	6	10	7	3	4	3	18	14	8			
VPCH												
Total Beds	8	8	8	8	8	8	25	25	25			
Average Daily Census	8	8	8	8	8	8	9	14	18			
Percent Occupancy	100%	100%	99%	100%	98%	100%	34%	55%	71%			
# Days at Occupancy	31	27	28	30	26	30	0	0	0			
# Days with Closed Beds	0	0	3	0	0	0	30	31	30			
Average # of Closed Beds	-	-	1	-	-	-	17	11	7			
BR TYLER 4												
Total Beds	14	14	14	14	14	14	14	14	14			
Average Daily Census	14	14	14	14	14	14	14	14	14			
Percent Occupancy	100%	100%	100%	100%	100%	100%	100%	100%	100%			
# Days at Occupancy	29	27	31	30	30	29	31	31	30			
# Days with Closed Beds	0	0	0	0	0	0	0	0	0			
Average # of Closed Beds	-	-	-	-	-	-	-	-	-			
RRMC SOUTH WING												
Total Beds	6	6	6	6	6	6	6	6	6			
Average Daily Census	6	6	6	6	6	6	6	6	6			
Percent Occupancy	98%	100%	100%	99%	100%	99%	100%	99%	100%			
# Days at Occupancy	28	28	31	29	31	29	31	29	30			
# Days with Closed Beds	6	0	1	2	0	0	0	0	2			
Average # of Closed Beds	1	-	1	1	-	-	-	-	1			
Wait Times for Beds												
Average # People Waiting per Day	6	7	11	8	8	8	8	4	6			

Based on data reported to the Vermont Department of Mental Health (DMH) by designated hospitals (DH) for adult inpatient care using the electronic bed boards system. Beds at inpatient settings can be closed based on the clinical decision of the director of each inpatient unit. Average number of people waiting per day is determined using the morning inpatient update and wait times in days are based upon data maintained by the VPCH admissions department that is submitted by crisis, designated agency, and hospital screeners.

Adult Inpatient Utilization and Bed Closures: Page 2 of 2

System Total and Non-Level 1 Units 2014

All Units
 Level 1 Units
 Non-Level 1 Adult Units

	Jan	Feb	Mar	Apr	May	Jun	Jul	Aug	Sep	Oct	Nov	Dec
ADULT INPATIENT UNITS												
Total Beds	169	169	169	169	169	169	188	188	161			
Average Daily Census	137	147	151	153	155	148	154	159	142			
Percent Occupancy	83%	87%	89%	91%	92%	88%	82%	85%	88%			
# Days at Occupancy	0	0	0	0	0	0	0	0	0			
# Days with Closed Beds	31	28	31	30	31	19	30	31	30			
Average # of Closed Beds	6	10	7	3	4	3	18	14	8			
CVMC												
Total Beds	14	14	14	14	14	14	14	14	14			
Average Daily Census	12	11	12	11	13	12	12	12	13			
Percent Occupancy	89%	76%	86%	81%	92%	85%	85%	87%	90%			
# Days at Occupancy	8	1	5	1	13	3	3	6	6			
# Days with Closed Beds	0	0	0	0	0	0	15	12	0			
Average # of Closed Beds	-	-	-	-	-	-	2	1	-			
FAHC												
Total Beds	27	27	27	27	27	27	27	27	27			
Average Daily Census	25	20	20	24	24	24	23	22	21			
Percent Occupancy	91%	74%	75%	89%	88%	89%	85%	80%	79%			
# Days at Occupancy	0	0	0	0	0	1	0	0	0			
# Days with Closed Beds	31	27	31	30	29	19	2	15	27			
Average # of Closed Beds	2	7	5	2	2	2	1	1	2			
BR (NON LEVEL 1 UNITS)												
Total Beds	73	73	73	73	73	73	75	75	75			
Average Daily Census	57	67	66	66	68	64	69	67	68			
Percent Occupancy	78%	92%	91%	91%	93%	87%	92%	89%	90%			
# Days at Occupancy	0	0	0	0	0	0	3	0	0			
# Days with Closed Beds	30	28	26	14	26	10	8	31	21			
Average # of Closed Beds	3	2	2	2	2	2	1	2	2			
RRMC GEN PSYCH												
Total Beds	17	17	17	17	17	17	17	17	17			
Average Daily Census	12	15	16	16	17	15	14	16	17			
Percent Occupancy	71%	89%	95%	96%	98%	90%	84%	93%	98%			
# Days at Occupancy	2	4	14	18	20	7	7	9	21			
# Days with Closed Beds	23	24	5	10	12	0	7	0	0			
Average # of Closed Beds	2	1	1	1	1	-	1	-	-			
WC												
Total Beds	10	10	10	10	10	10	10	10	10			
Average Daily Census	6	8	8	7	8	6	7	9	7			
Percent Occupancy	61%	76%	77%	69%	83%	64%	68%	85%	70%			
# Days at Occupancy	1	4	5	3	7	2	6	7	0			
# Days with Closed Beds	3	2	0	0	0	0	1	0	0			
Average # of Closed Beds	6	2	-	-	-	-	2	-	-			
Wait Times for Beds												
Average # People Waiting per Day	6	7	11	8	8	8	8	4	6			

Based on data reported to the Vermont Department of Mental Health (DMH) by designated hospitals (DH) for adult inpatient care using the electronic bed boards system. Beds at inpatient settings can be closed based on the clinical decision of the director of each inpatient unit. Average number of people waiting per day is determined using the morning inpatient update and wait times in days are based upon data maintained by the VPCH admissions department that is submitted by crisis, designated agency, and hospital screeners.