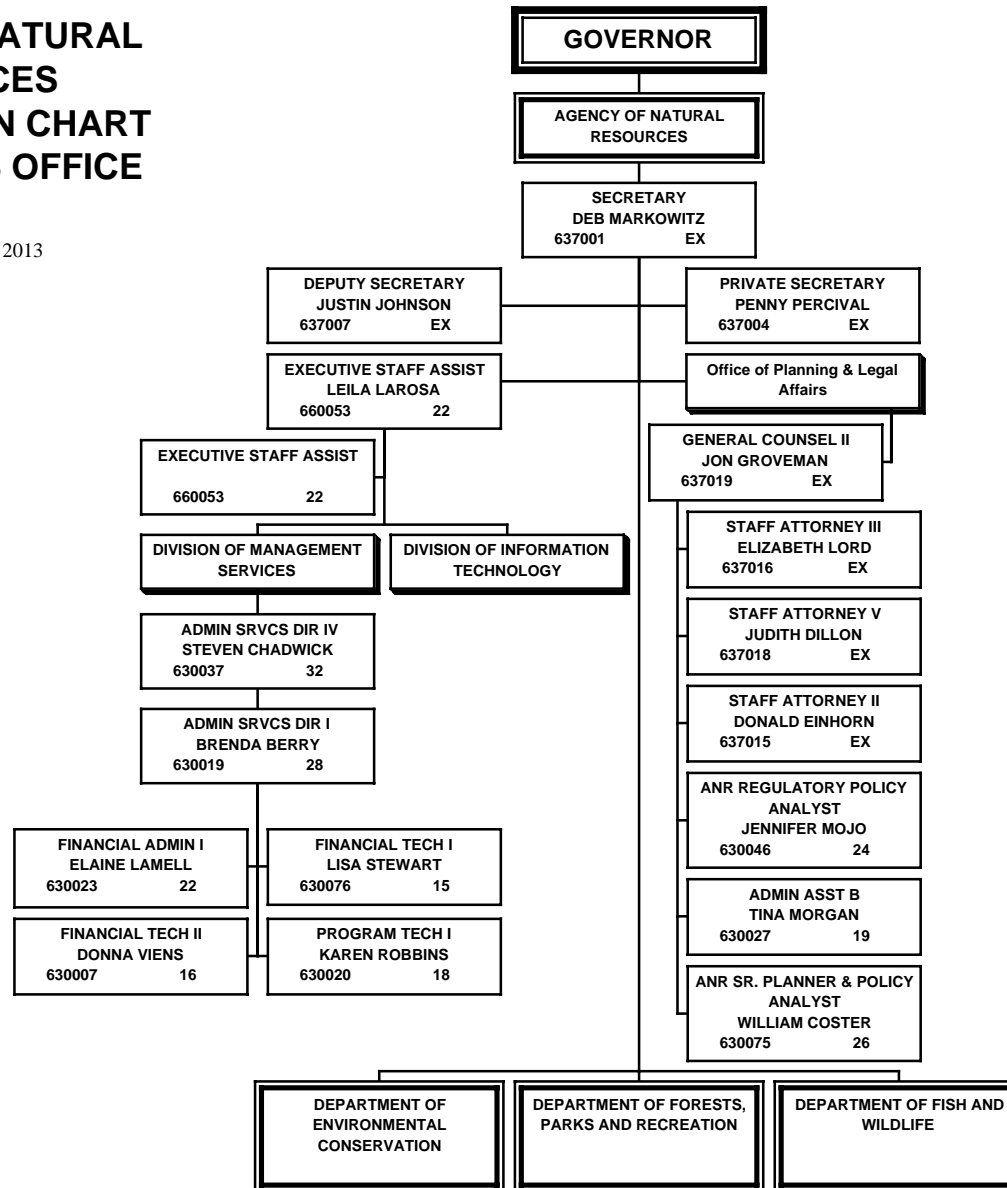


AGENCY OF NATURAL RESOURCES ORGANIZATION CHART SECRETARY'S OFFICE

January 15, 2013

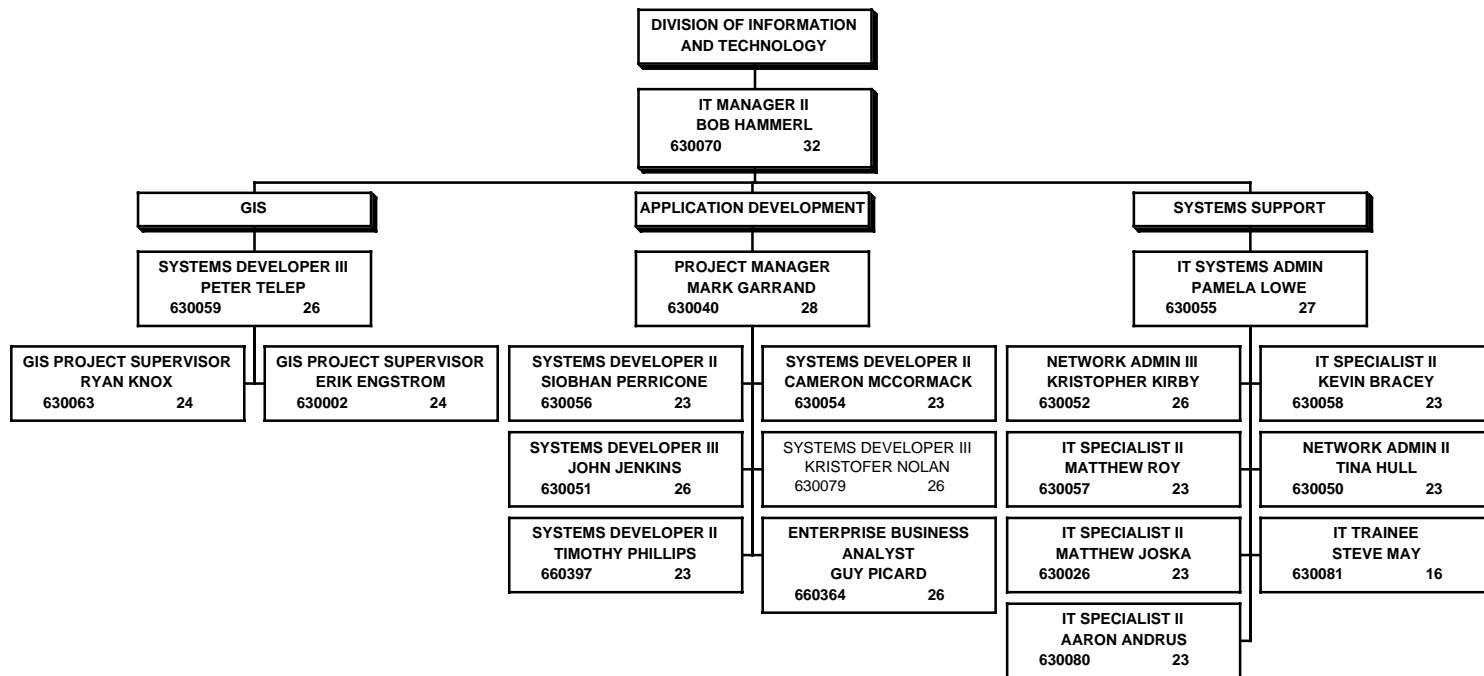


DIVISION OF MANAGEMENT SERVICES

ANR 3

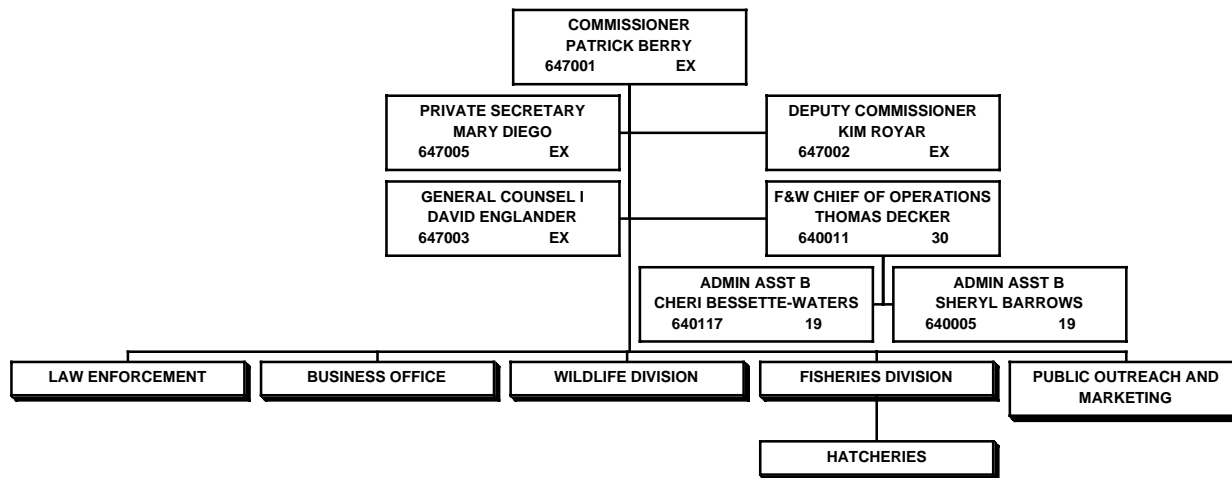
AGENCY OF NATURAL RESOURCES ORGANIZATION CHART INFORMATION TECHNOLOGY DIVISION

10/31/12



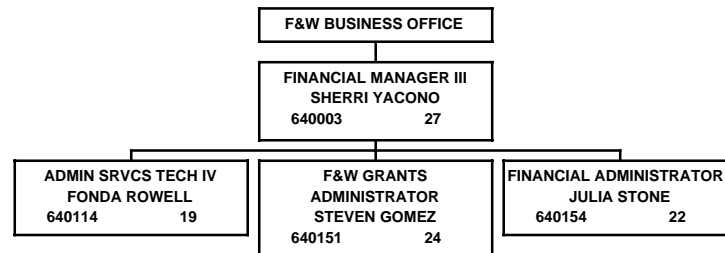
**DEPARTMENT OF FISH AND
WILDLIFE
ORGANIZATION CHART
COMMISSIONER'S OFFICE**

June 13, 2012



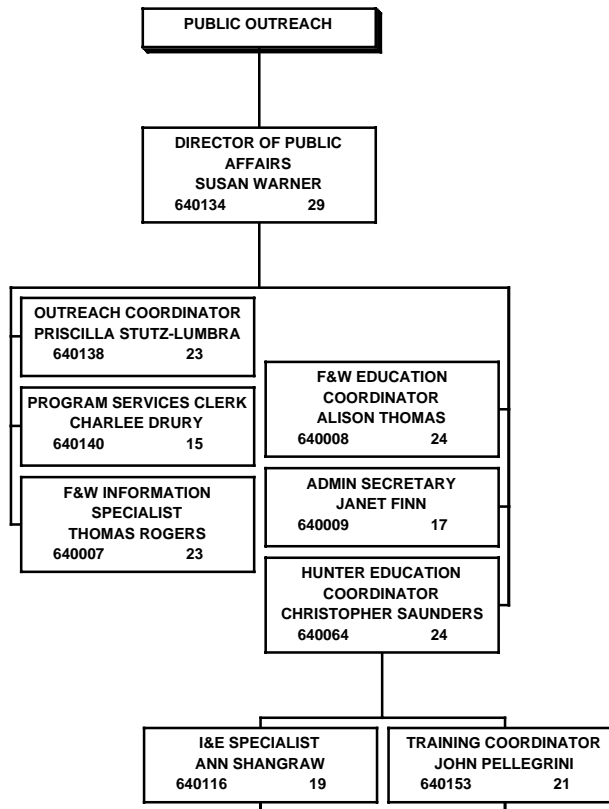
DEPARTMENT OF FISH AND WILDLIFE BUSINESS OFFICE

June 13, 2012



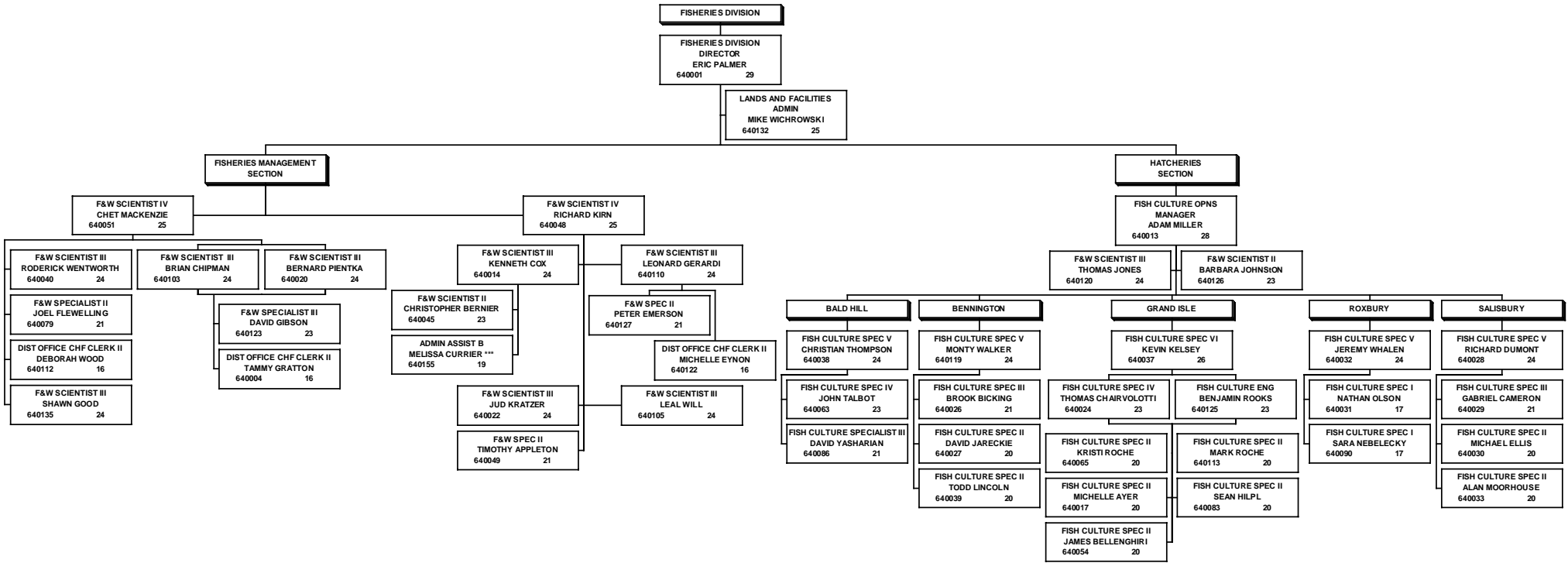
DEPARTMENT OF FISH AND WILDLIFE PUBLIC OUTREACH/MARKETING DIVISION

November 8, 2012



**DEPARTMENT OF FISH AND WILDLIFE
FISHERIES DIVISION
INCLUDING HATCHERIES**

December 6, 2012

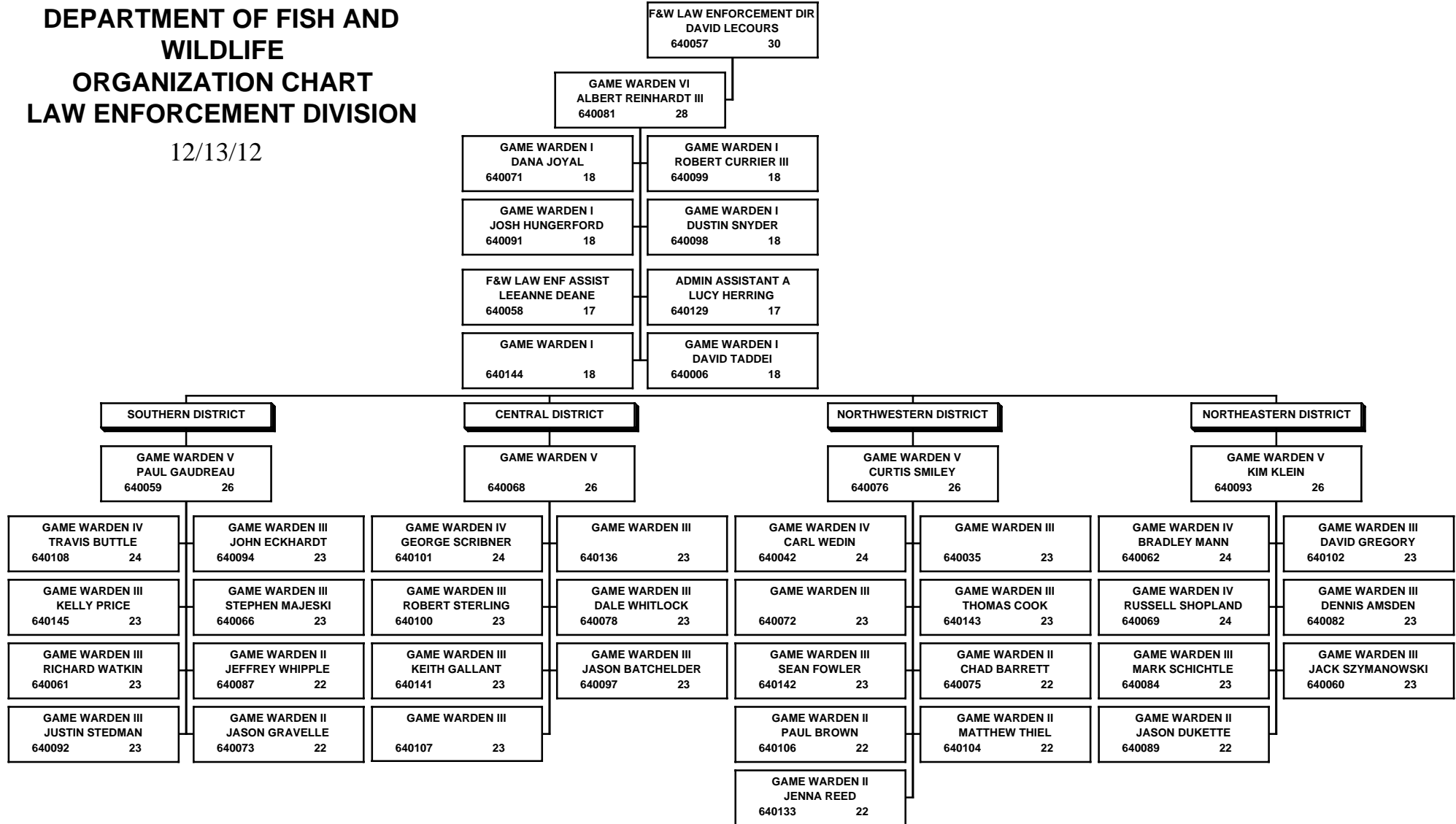


FISH AND WILDLIFE
FISHERIES DIVISION
FISHERIES FW 10
HATCHERIES FW 12

***Provides administrative support to FPR

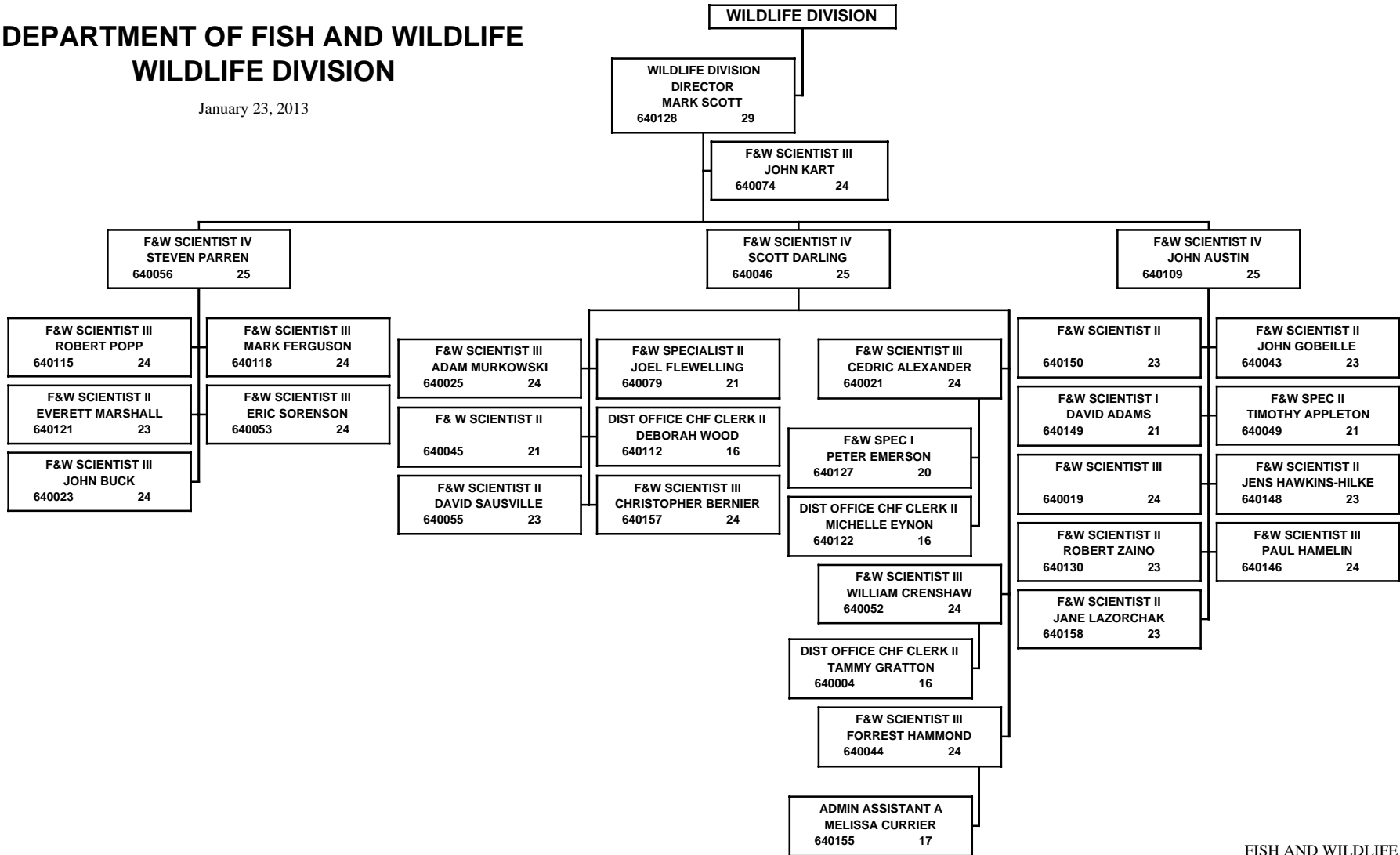
**DEPARTMENT OF FISH AND
WILDLIFE
ORGANIZATION CHART
LAW ENFORCEMENT DIVISION**

12/13/12



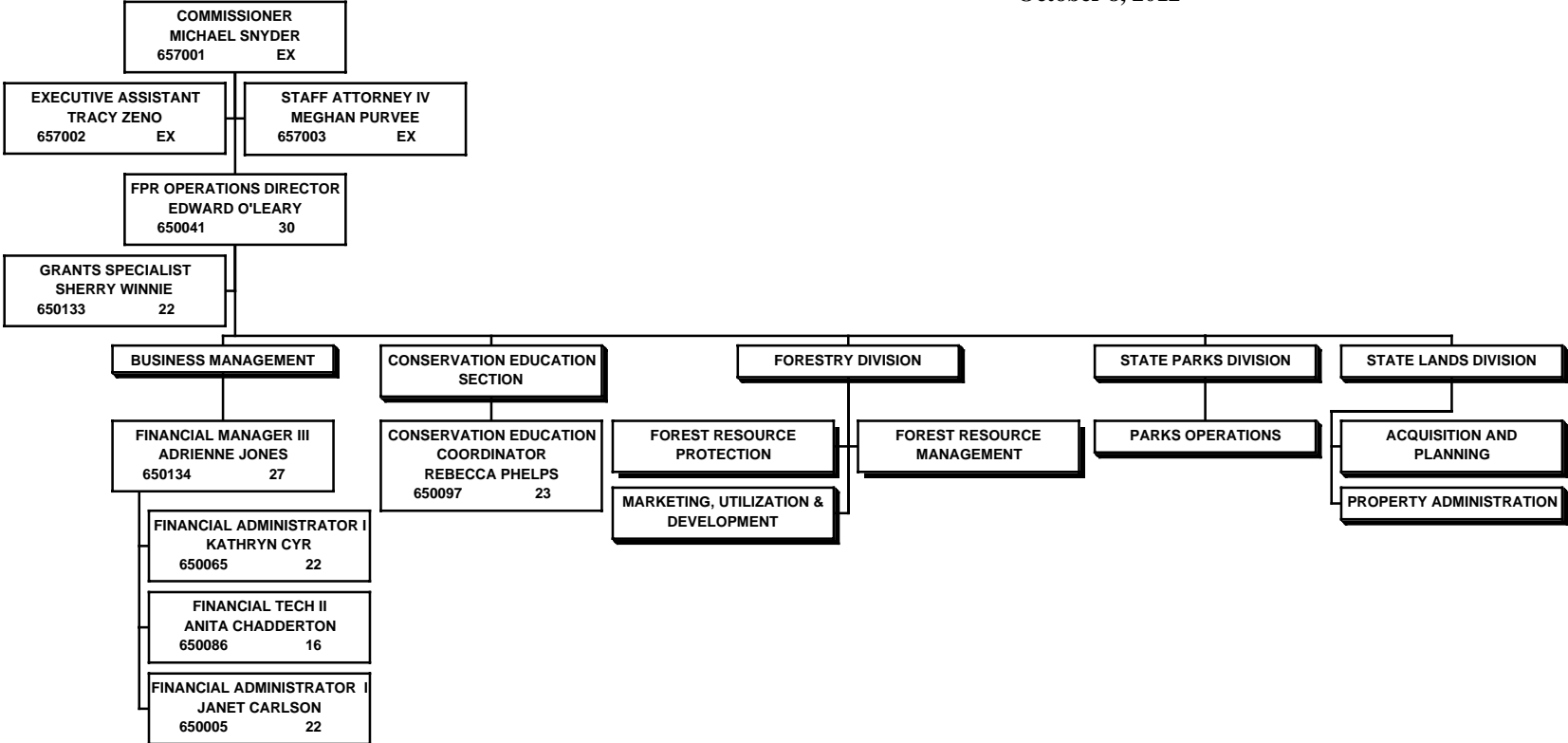
DEPARTMENT OF FISH AND WILDLIFE WILDLIFE DIVISION

January 23, 2013



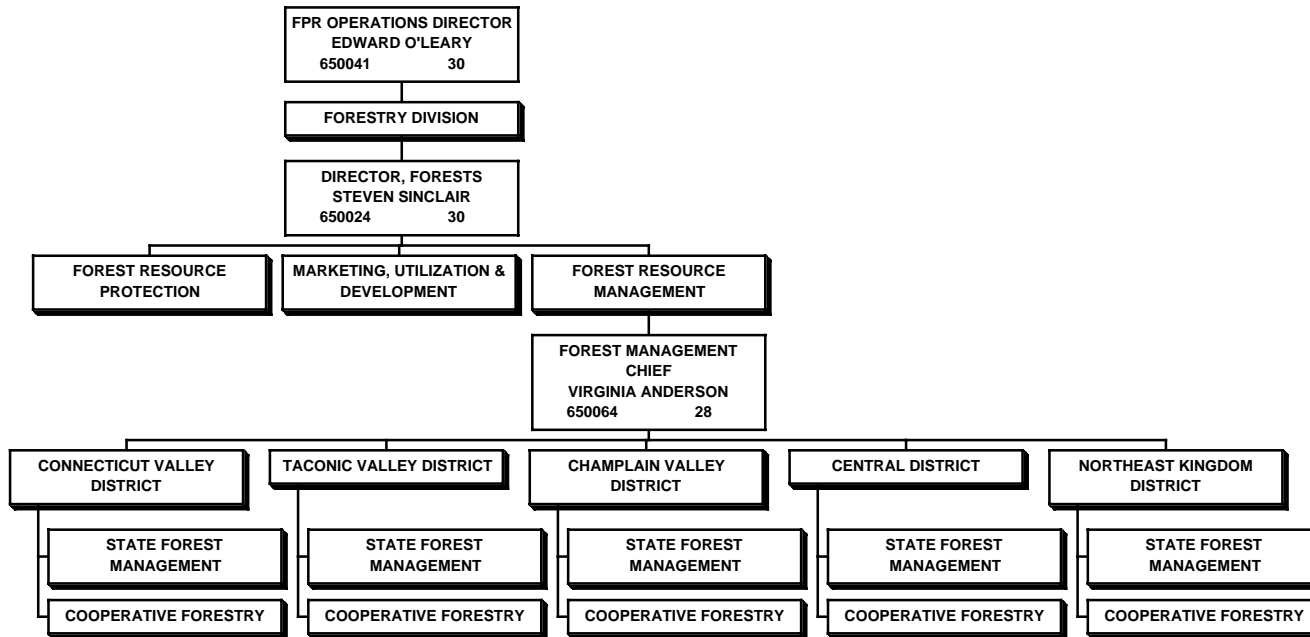
**DEPARTMENT OF FORESTS, PARKS AND
RECREATION
ORGANIZATION CHART
COMMISSIONER'S OFFICE**

October 8, 2012

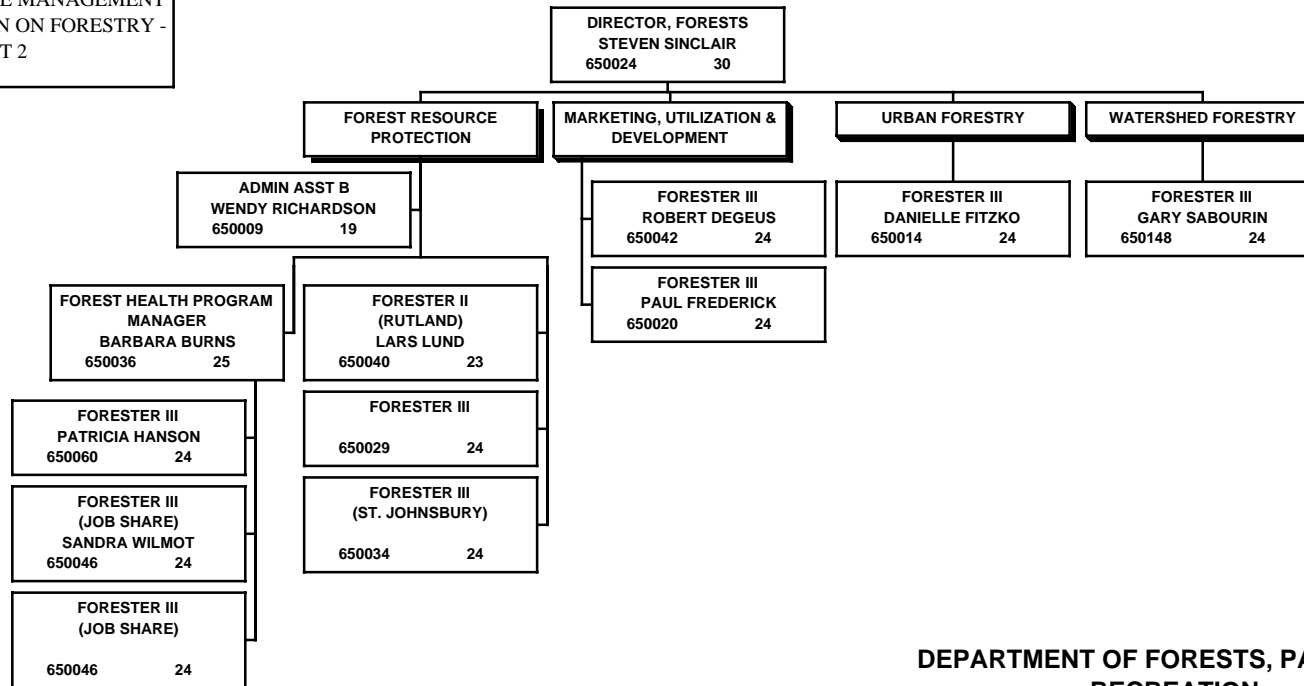


DEPARTMENT OF FORESTS, PARKS AND RECREATION ORGANIZATION CHART FORESTRY DIVISION - GENERAL LAYOUT

August 20, 2009



FOREST RESOURCE MANAGEMENT
SECTION IS SHOWN ON FORESTRY -
PART 2



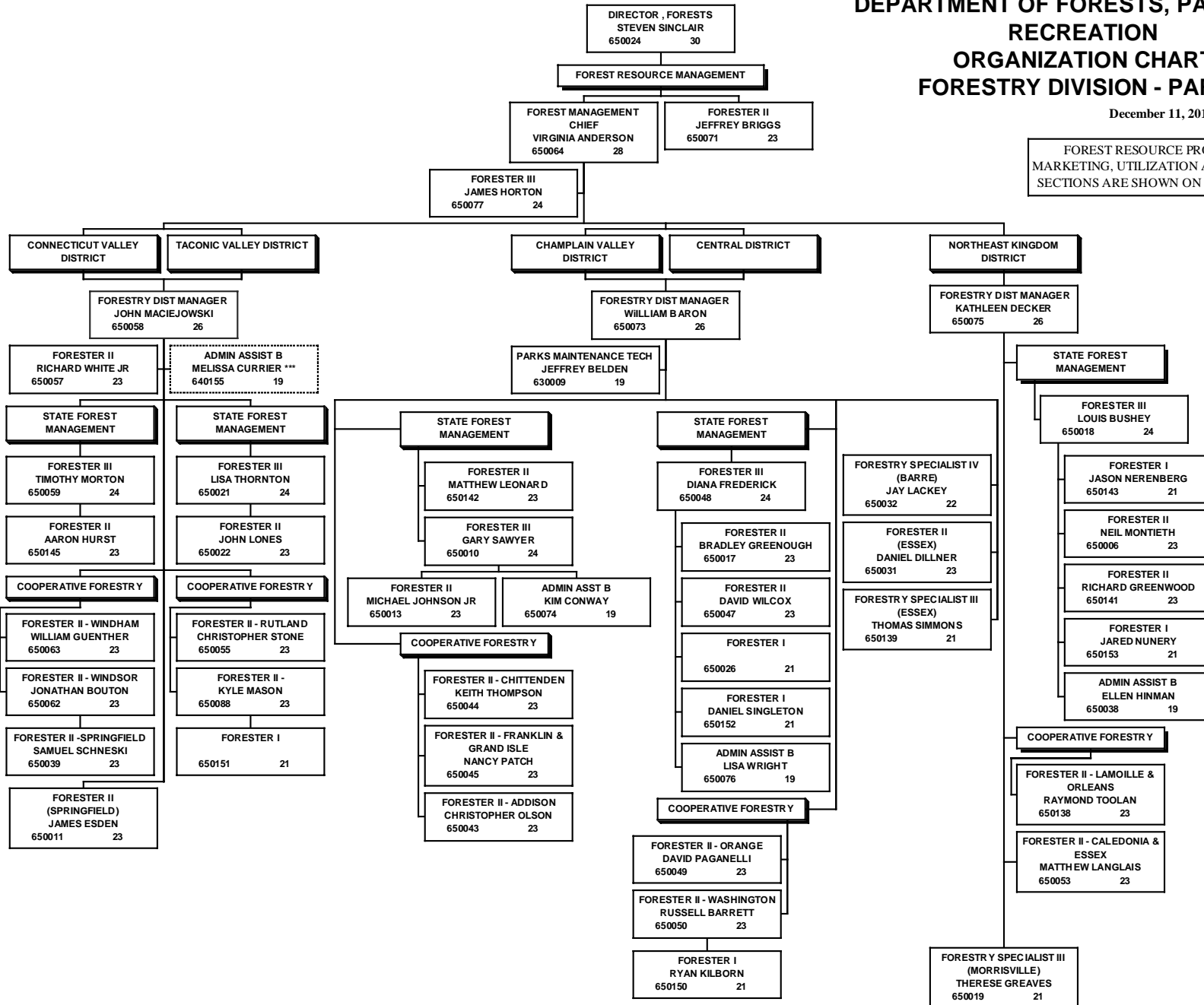
**DEPARTMENT OF FORESTS, PARKS AND
RECREATION
ORGANIZATION CHART
FORESTRY DIVISION
PART 1**

12/07/11

DEPARTMENT OF FORESTS, PARKS AND RECREATION ORGANIZATION CHART FORESTRY DIVISION - PART 2

December 11, 2012

FOREST RESOURCE PROTECTION AND MARKETING, UTILIZATION AND DEVELOPMENT SECTIONS ARE SHOWN ON FORESTRY - PART 1

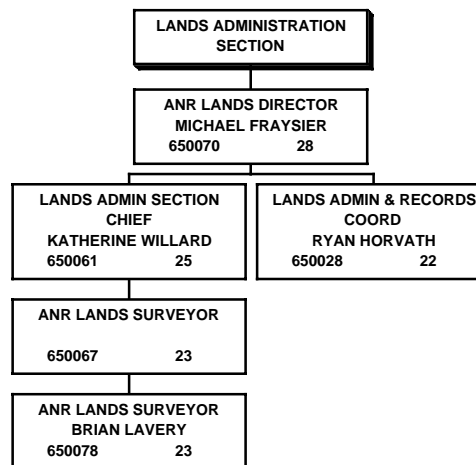


FORESTS, PARKS AND RECREATION
FORESTRY PART 2
FPR 4

*** Provides administrative support to FPR, supervised by Jay McMenemy in F&W

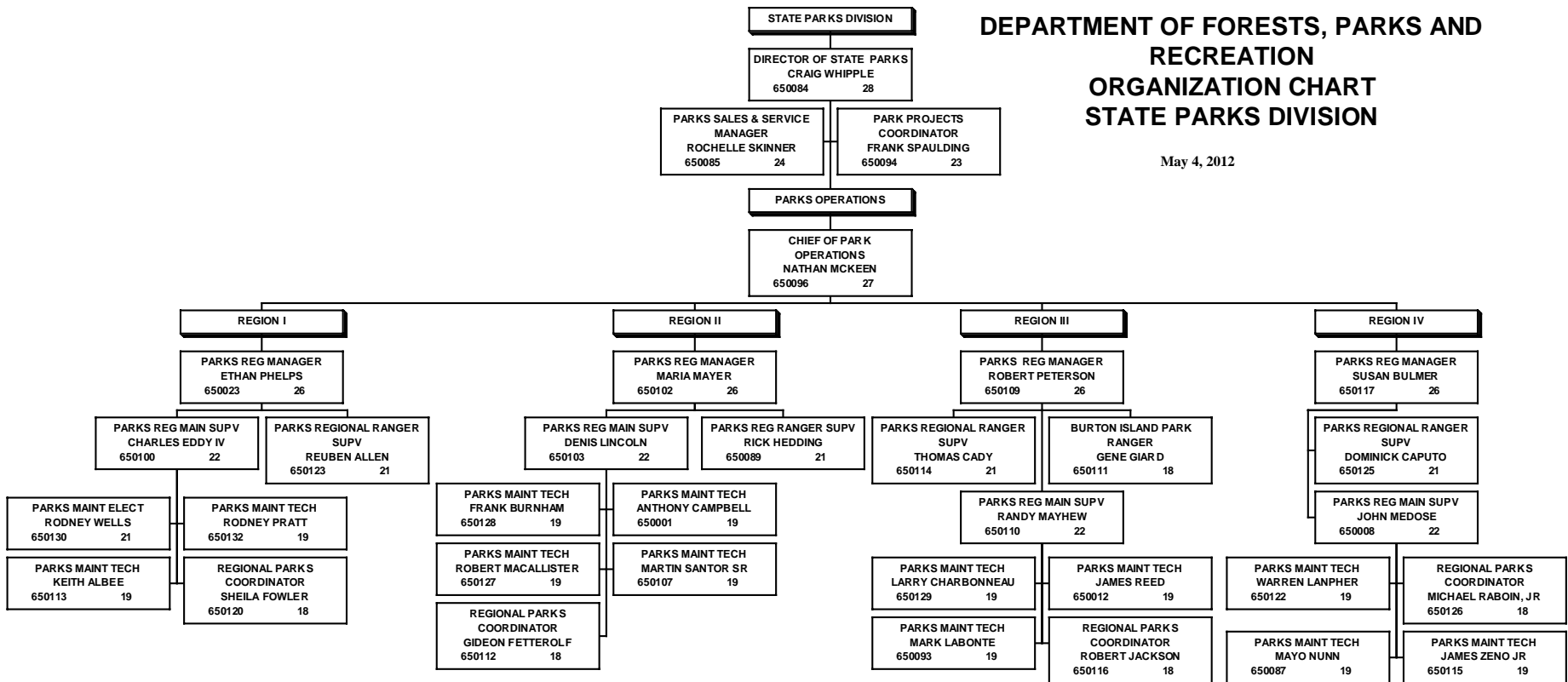
**DEPARTMENT OF FORESTS, PARKS
AND RECREATION
ORGANIZATION CHART
LANDS ADMINISTRATION**

December 7, 2012



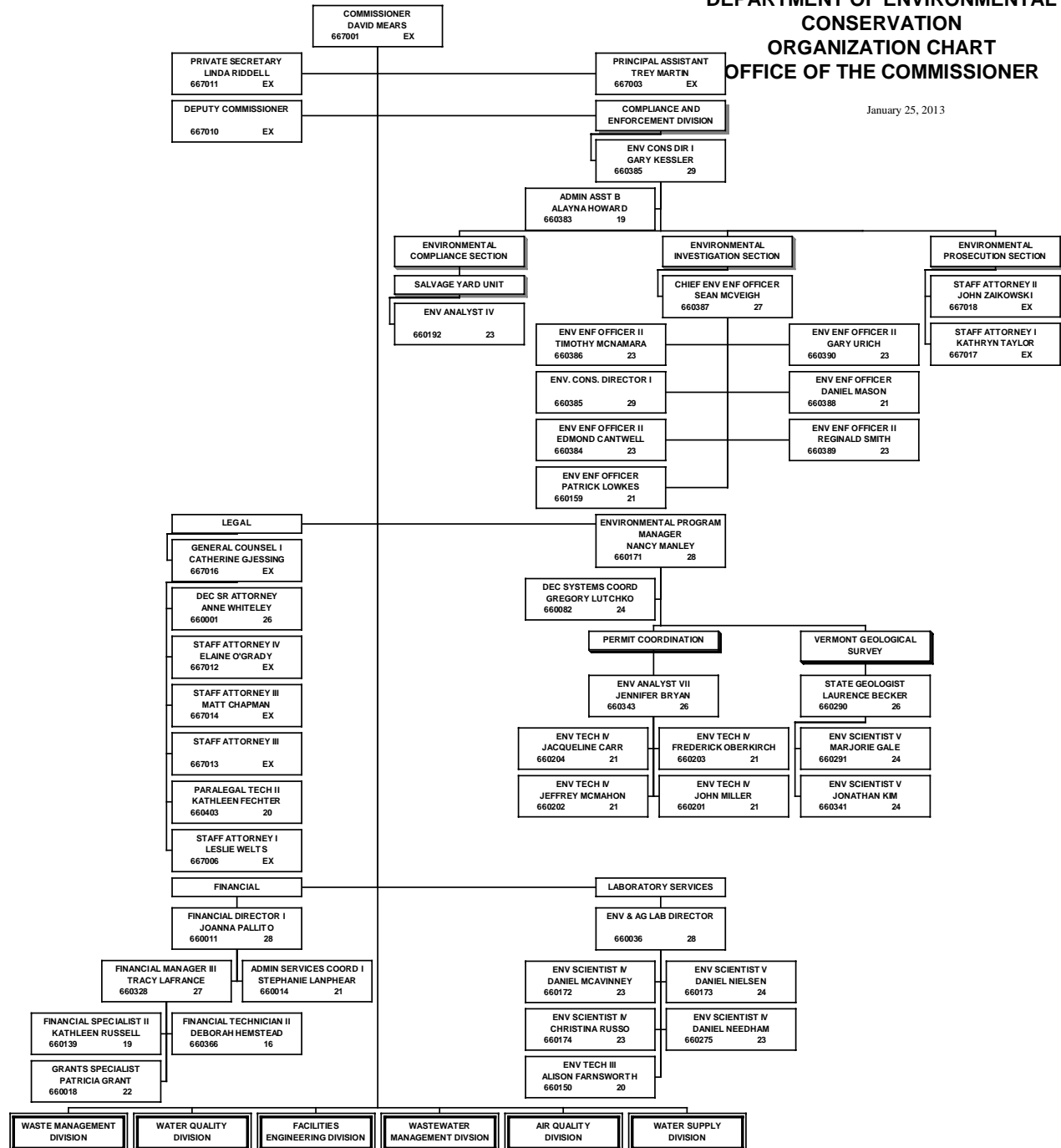
DEPARTMENT OF FORESTS, PARKS AND RECREATION ORGANIZATION CHART STATE PARKS DIVISION

May 4, 2012



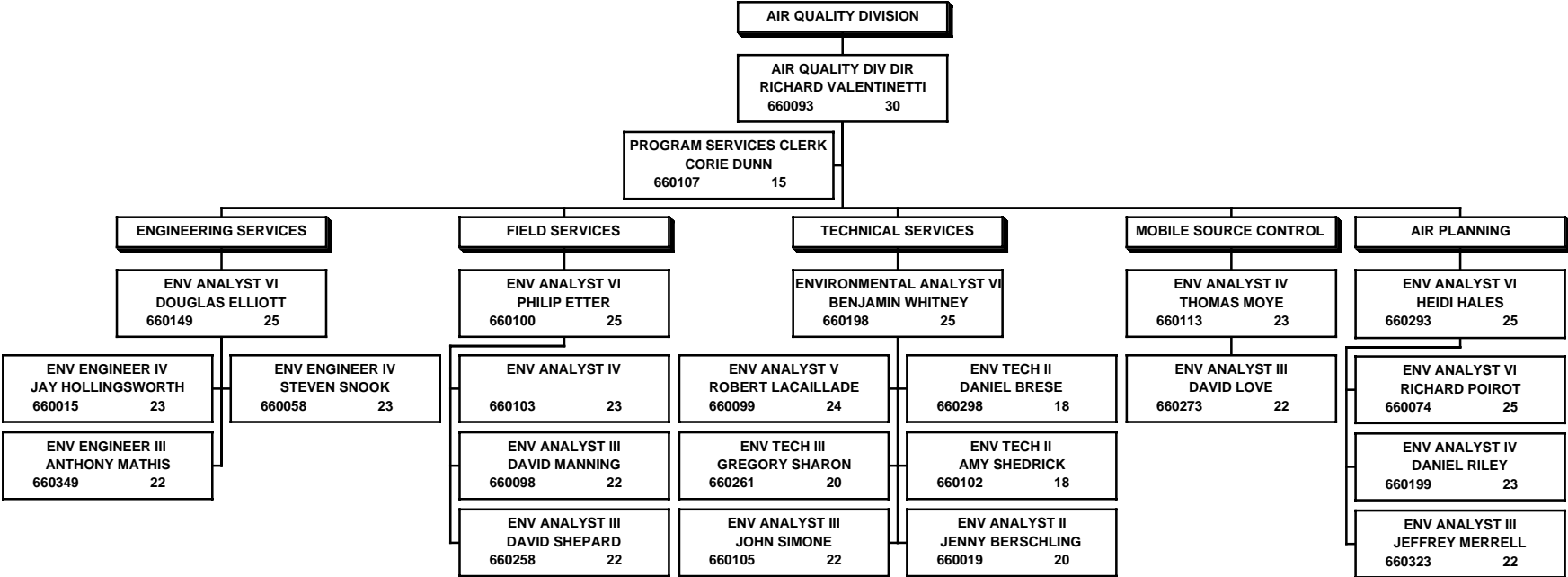
DEPARTMENT OF ENVIRONMENTAL CONSERVATION ORGANIZATION CHART OFFICE OF THE COMMISSIONER

January 25, 2013

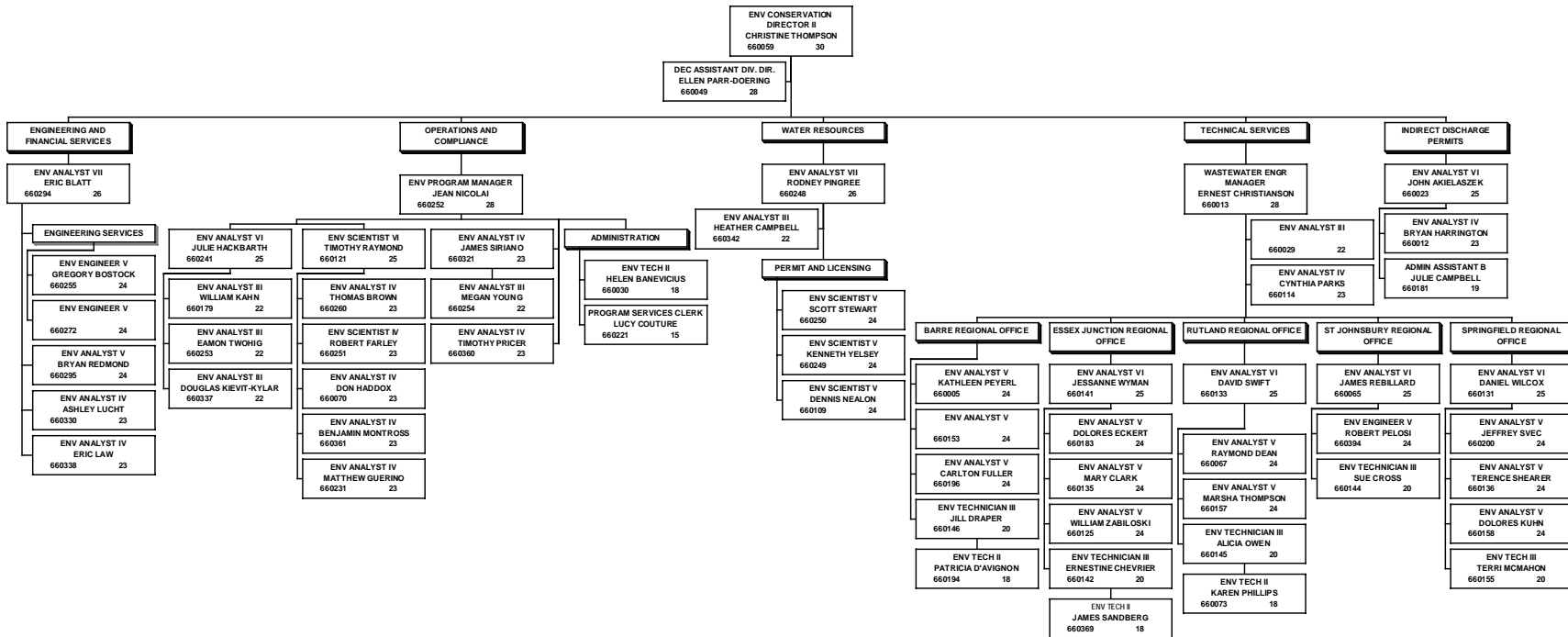


**DEPARTMENT OF ENVIRONMENTAL
CONSERVATION
ORGANIZATION CHART
AIR QUALITY DIVISION**

12/13/12

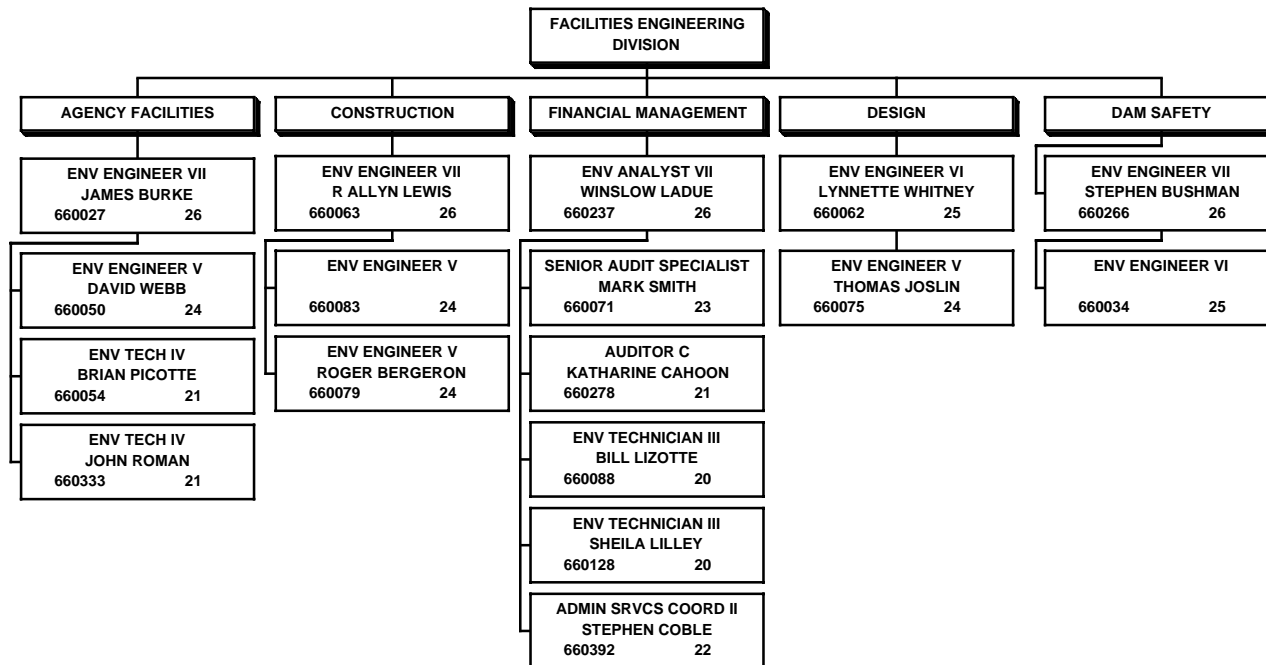


**DEPARTMENT OF ENVIRONMENTAL CONSERVATION
ORGANIZATION CHART
DRINKING WATER AND GROUNDWATER
PROTECTION DIVISION** December 7, 2012



DEPARTMENT OF ENVIRONMENTAL CONSERVATION ORGANIZATION CHART FACILITIES ENGINEERING DIVISION

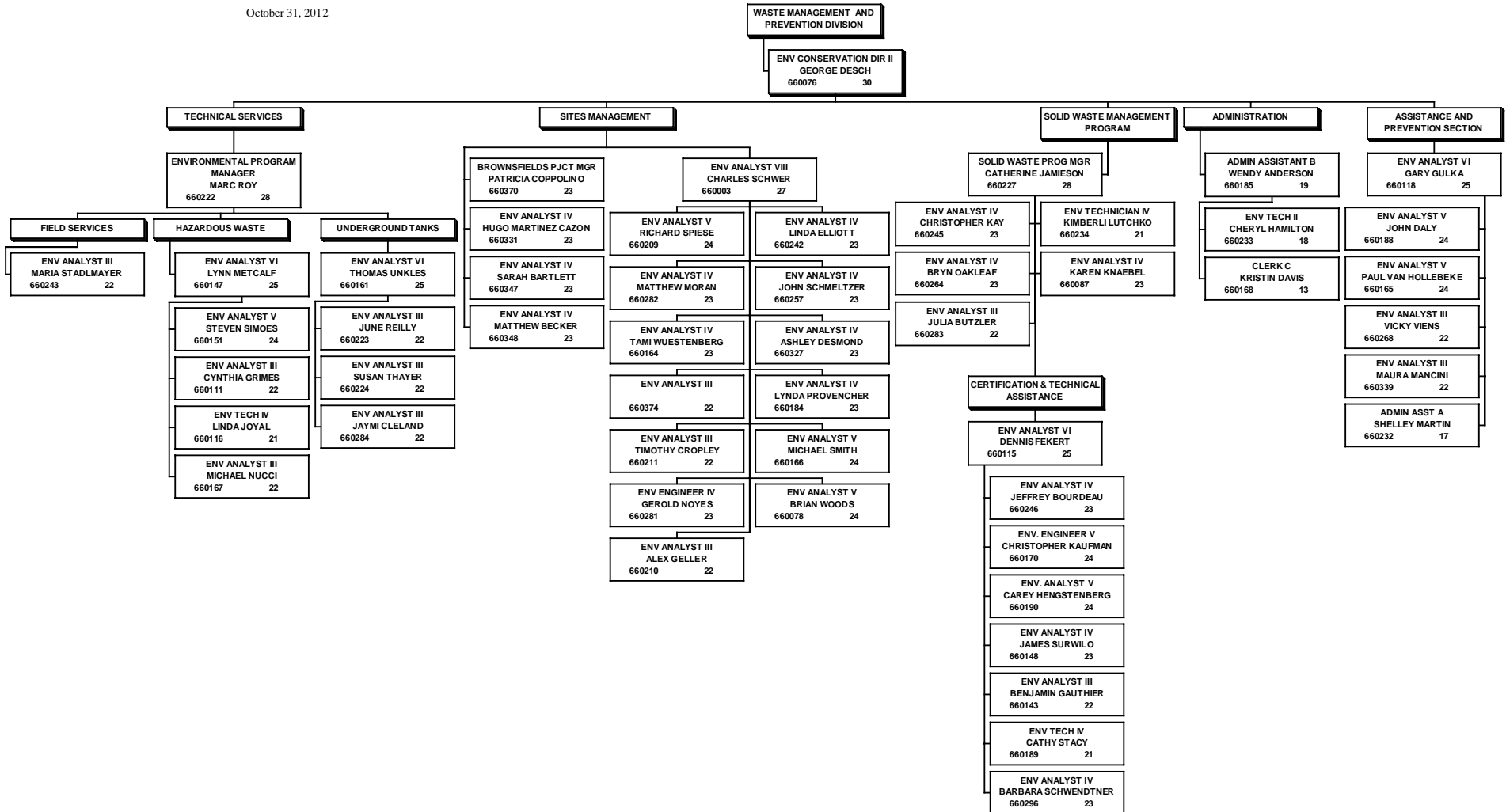
October 31, 2012



ENVIRONMENTAL CONSERVATION
FACILITIES ENGINEERING DIVISION
DEC 2

DEPARTMENT OF ENVIRONMENTAL CONSERVATION ORGANIZATION CHART WASTE MANAGEMENT AND PREVENTION DIVISION

October 31, 2012



**DEPARTMENT OF ENVIRONMENTAL CONSERVATION
ORGANIZATION CHART
WATERSHED MANAGEMENT DIVISION**

